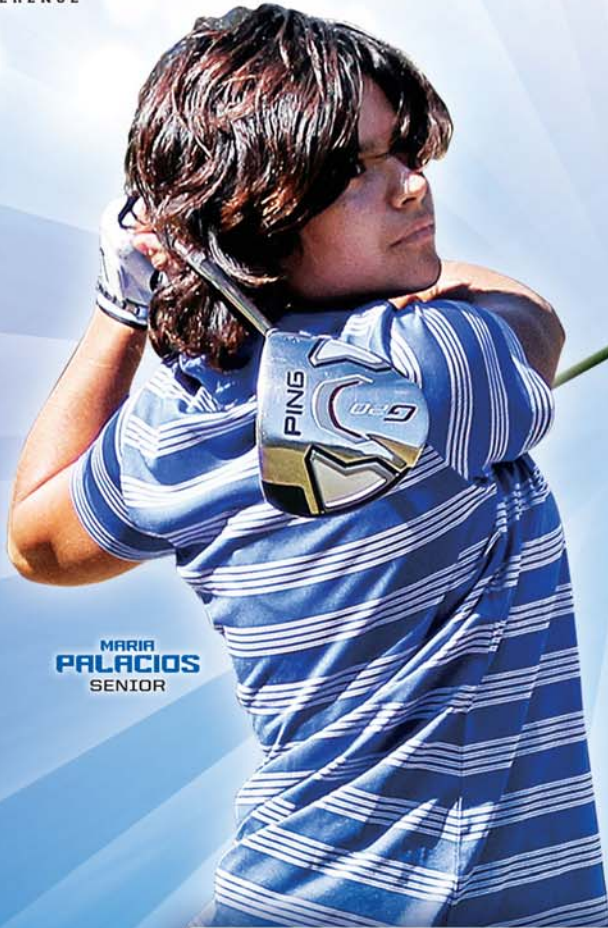




SUN BELT  
CONFERENCE

GSU



MARIA  
PALACIOS  
SENIOR



LAURA  
SANCHEZ  
SENIOR

2013 - 14 WOMEN'S GOLF

# GEORGIA STATE



GEORGIASTATESPORTS.COM



MELISSA SIVITER  
SENIOR



LAURA SANCHEZ  
SENIOR



SOLVEIG HEIGESEN  
SENIOR



MARIA PALACIOS  
SENIOR

# 2013-14 SCHEDULE

| DATES     | TOURNAMENT                        | HOST              | LOCATION             | COURSE                  |
|-----------|-----------------------------------|-------------------|----------------------|-------------------------|
| 9/20-22   | LADY PALADIN INVITATIONAL         | FURMAN            | GREENVILLE, S.C.     | FURMAN UNIVERSITY G.C.  |
| 9/30-10/2 | OLD WAVERLY BULLDOG INVITATIONAL  | MISSISSIPPI STATE | STARKVILLE, MISS.    | OLD WAVERLY CLUB        |
| 10/7-8    | LADY PIRATE INTERCOLLEGIATE       | EAST CAROLINA     | GREENVILLE, N.C.     | GREENVILLE COUNTRY CLUB |
| 10/26-27  | EDWIN WATTS/PALMETTO              | CHARLESTON        | KIAWAH ISLAND, S.C.  | COUGAR POINT GOLF CLUB  |
| 2/9-11    | UCF CHALLENGE                     | UCF               | ORLANDO, FLA.        | EAGLE CREEK GOLF CLUB   |
| 3/14-16   | JMU EAGLE LANDING INVITATIONAL    | JAMES MADISON     | ORANGE PARK, FLA.    | EAGLE LANDING C.C.      |
| 3/24-25   | UALA WOMEN'S GOLF CLASSIC         | UALA              | LITTLE ROCK, ARK.    | DIAMANTE COUNTRY CLUB   |
| 3/30-4/1  | JOHN KIRK PANTHER INTERCOLLEGIATE | GEORGIA STATE     | STOCKBRIDGE, GA.     | EAGLE'S LANDING C.C.    |
| 4/14-16   | SUN BELT CHAMPIONSHIP             | SUN BELT          | LOXLEY, ALA.         | STEELWOOD COUNTRY CLUB  |
| 5/8-10    | NCAA REGIONAL                     | NCAA              | THREE REGIONAL SITES | T&A                     |
| 5/20-23   | NCAA CHAMPIONSHIP                 | NCAA              | TULSA, OKLA.         | TULSA COUNTRY CLUB      |

**QUICK FACTS**

Location ..... Atlanta, Ga.  
 Founded ..... 1913  
 Enrollment ..... 32,000  
 Nickname ..... Panthers  
 Colors ..... Blue (PMS 286) and White  
 Affiliation ..... NCAA Division I  
 Conference ..... Sun Belt Conference  
 President ..... Mark P. Becker/5th Year  
 Athletics Director ..... Cheryl L. Levick/5th Year  
 Executive Sr. Assoc.AD/Development-Supervisor ..... Todd Reeser  
 Athletics Dept. Phone ..... (404) 413-4000

**STAFF**

Head Coach: ..... Cathy Mant/14th season  
 Phone: ..... (404) 413-4066  
 Fax: ..... (404) 413-4001  
 E-mail: ..... cmant@gsu.edu  
 Assistant Coach: ..... TBA  
 Phone: ..... (404) 413-4066  
 E-mail: ..... TBA  
 Head Athletic Trainer ..... Dinika Johnson  
 Home Course: .. Eagle's Landing Country Club (Stockbridge, Ga.)

**RECAP**

2012-13 Record: ..... 60-90-1  
 2012-13 Sun Belt Finish: ..... 7th  
 Starters Returning/Lost: ..... 5/0  
 Letterwinners Returning/Lost: ..... 6/1  
 Newcomers: ..... 2

**HISTORY**

Team NCAA Regional Appearances: ..... 6  
 ..... (2003, 2005, 2006, 2008, 2009, 2010)  
 Individual NCAA Regional Appearances: ..... 2  
 ..... (2011, 2012)  
 Team Conference Championships: ..... 5  
 ..... (2003, 2005, 2006, 2009, 2010)  
 Individual Conference Championships: ..... 8  
 ..... (2003, 2004, 2005, 2006, 2008, 2010, 2011, 2012)

**SPORTS COMMUNICATIONS**

Associate A.D.-Comm. & Public Relations ..... Jerry Trickle  
 Assistant Athletics Director ..... Allison George  
 Assistant Athletics Director ..... Charlie Taylor  
 Assoc. Sports Comm. Director (Golf) ..... Mike Holmes  
 Office Phone ..... (404) 413-4033  
 Cell Phone ..... (404) 259-9716  
 Fax ..... (404) 413-4035  
 E-mail ..... rholmes@gsu.edu  
 Web Site ..... www.GeorgiaStateSports.com  
 Mailing Address ..... P.O. Box 3975  
 ..... Atlanta, GA 30302-3975  
 Overnight Address ..... 125 Decatur Street, Suite 130  
 ..... Atlanta, GA 30303

The 2013-14 Georgia State Women's Golf Media Guide was produced to aid the media in its coverage of the GSU women's golf team. Additional information and photographs are available to accredited members of the media through the Georgia State Sports Communications office. If you need additional materials, please contact Associate Sports Communications Director Mike Holmes at (404) 413-4033 or via e-mail at rholmes@gsu.edu.

Mailing Address:  
 Georgia State University, Attn. Sports Communications Office  
 125 Decatur Street SE, Suite 130  
 Atlanta, GA 30303

**Interviews**

All interview requests for Georgia State coaches and student-athletes should be made through Mike Holmes. Student-athletes will be made available during non-class hours. Coach Mant is available most mornings. Student-athletes and coach Mant will also be made available after weekday practices.

**TABLE OF CONTENTS**

General Information ..... 1  
 Roster/Pronunciation Guide ..... 2  
 Season Preview ..... 2-3  
 President Mark P. Becker ..... 4  
 Director of Athletics Cheryl L. Levick ..... 5  
 Athletics Administration ..... 6  
 Athletics Master Plan ..... 7  
 Head Coach Cathy Mant ..... 8-9  
 Support Staff ..... 10  
 Panther Profiles ..... 11-21  
 2012-13 Review ..... 23  
 Year-by-Year Results ..... 24-26  
 All-Time Roster ..... 27  
 Tournament Records ..... 28-29  
 Individual Records ..... 30-32  
 Conference Honors ..... 33  
 All-Academic Honors ..... 34  
 NCAA Regional Appearances ..... 35-36  
 John Kirk Panther Intercollegiate ..... 37-39  
 Georgia State University ..... 40-41  
 Campus Life ..... 42-43  
 Campus Housing ..... 44-45  
 This is Atlanta ..... 46-47  
 Strength & Conditioning ..... 48  
 Sports Medicine ..... 49  
 Student-Athlete Development ..... 50  
 Community Service ..... 51  
 Athletic Facilities ..... 52  
 Mercedes Van ..... 53  
 Special Thanks/Panther Booster Club ..... 54

**CREDITS**

The 2013-14 Georgia State University women's golf media guide is an official publication of the Georgia State Sports Communications Office. The publication was written, edited and designed by Mike Holmes. Cover design Summit Media. Photography by Georgia State Sports Information, Todd Drexler, Stephen Jones, Randy Wilson, and the GSU women's golf coaching staff. Special thanks to those who assisted on the guide, including head coach Cathy Mant, former assistant coach Lorraine Ballerano and the GSU Sports Communications staff.

**NCAA PRINCIPLE OF SPORTING BEHAVIOR AND ETHICAL CONDUCT**

For intercollegiate athletics to promote the character development of participants, to enhance the integrity of higher education and to promote civility in society, student-athletes, coaches, and all others associated with these athletics programs and events should adhere to such fundamental values as respect, fairness, civility, honesty and responsibility. These values should be manifest not only in athletics participation, but also in the broad spectrum of activities affecting the athletics program.

# ROSTER

| Name             | Year | Height | Hometown           | Previous School                       |
|------------------|------|--------|--------------------|---------------------------------------|
| Jooeun Bae       | Fr.  | 5-2    | Seoul, South Korea | IMG Academy                           |
| Lauren Court     | Jr.  | 5-8    | Lawrenceville, Ga. | Collins Hill H.S.                     |
| Solveig Helgesen | Sr.  | 5-9    | Hagavik, Norway    | Norwegian School of Top Athletes      |
| Solene Le Coz    | Fr.  | 5-7    | Le Raincy, France  | Lycee Albert Schweitzer               |
| Julie Lied       | So.  | 5-7    | Bergen, Norway     | Wang Vidals Toppidrett                |
| Maria Palacios   | Sr.  | 5-5    | Castellon, Spain   | Western Texas College                 |
| Laura Sanchez    | Sr.  | 5-2    | Bogota, Colombia   | Gimnasio Aleman Friedrich von Shiller |
| Melissa Siviter  | Sr.  | 5-3    | Coseley, England   | Belmont Abbey College                 |

## COACHING STAFF

**Head Coach:** Cathy Mant, 14th season (Arizona State, 1972)

**Assistant Coach:** TBA

**Athletic Trainer:** Dinika Johnson

**Strength & Conditioning Coach:** Devin Vernick

## PRONUNCIATION GUIDE

Jooeun Bae..... June Bay  
 Solveig Helgesen..... SOUL-vay HELL-guh-sin  
 Solene Le Coz..... so-Lane Lei-coz  
 Maria Palacios..... PUH-la-SEE-os  
 Melissa Siviter ..... SIH-vih-tur

# SEASON PREVIEW

After dominating the Colonial Athletic Association in women's golf for seven years, Georgia State took a small step back entering its first season in the Sun Belt Conference last year, but all of the evidence points to great things for the program entering the 2013-14 season.

Before looking ahead to this year, a quick recap of last season. Head coach Cathy Mant had to replace one of the top-five golfers in Georgia State history in Charlotte Lorentzen who had qualified for back-to-back NCAA Regionals as an individual. Mant also had to bring in one of her biggest recruiting classes, knowing it would take some time for the team to gel and adjust to life at Georgia State. Combine that with a tough schedule and it made for a season sub-par to Mant's high standards.

"Going into last season, we knew that we would have some challenges with a new team," Mant said. "I was extremely proud of the effort our student-athletes put in as each one greatly improved from the start of the season to the end. What I believe will make this year great is if they can use that momentum, carry it over into practice now and by the end of the year, we should be looking at an opportunity to play in the postseason again."

All five starters are back from last year, including senior Maria Palacios who earned All-Sun Belt Second Team honors. In her first year after transferring from Western Texas College, Palacios tied for the team lead with a 76.70 scoring average. She finished the year with five top-25 performances.

"Maria had a solid first season for us," Mant continued. "If you look at her results, she greatly improved from the fall to the spring. After a very good summer, I expect her to be one of our team leaders again this season."

She is joined by seniors Laura Sanchez, Melissa Siviter and Solveig Helgesen. Sanchez tied with Palacios for the team lead with a 76.70 scoring average and finished among the top 12 in the final three events of the year: the John Kirk Panther Intercollegiate, UNCW Seahawk Classic and Sun Belt Conference Championship.

"Laura really finished last year strong," Mant said. "She showed at the end of the year why I think she can be a great leader for this team both on and off the golf course. After a career-best finish at the John Kirk Panther Intercollegiate, she kept playing great the rest of the season and it really helped the team."

Siviter played in all 10 events last season for the Panthers after transferring from Belmont Abbey College. She too finished the year strong, scoring three straight top-25 finishes, including a career-best tie for seventh at the UNCW Seahawk Classic. In



her final round of the year, she shot a career-low 73 on the Robert Trent Jones-Fighting Joe Course as a part of the Sun Belt Championship.

Helgesen only played in three events last year, but they were the final three and she made them count. In her first appearance, competing as an individual, Helgesen finished a career-best tied for eighth at the John Kirk Panther Intercollegiate. After a 30th-place finish at the UNCW Seahawk Classic, she finished 36th at the Sun Belt Conference Championship.

“This year’s team will have a great deal of senior leadership,” Mant continued. “Last year, with so many newcomers, I think a lot of the players didn’t know if they should be the ones to step up to that challenge of leading. This squad wants to finish on a high-note and go out as winners.”

Lauren Court, the lone junior on the squad, returns for her third year at GSU. She competed in five tournaments last season and has plenty of competition experience, playing in 43 rounds in her two seasons.

Another returner will be sophomore Julie Lied who played in all 10 events as a freshman, compiling a 78.90 scoring average. She shot a career-low 71 in the Golfweek Conference Challenge and finished tied for 26th at the JMU Eagle Landing Invitational, her best finish of the year.

“Lauren and Julie are both very talented players,” Mant said. “I think each one of them has worked extremely hard on their games and will be prepared for the challenge that awaits them this season.”

Coach Mant will also welcome to the team Jooeun Bae from South Korea and Solene Le Coz from France. Both bring a great deal of junior international experience and should make an impact on the team immediately.

The Panthers will open the fall at the Lady Paladin Invitational hosted by Furman in Greenville, S.C., Sept. 20-22. Georgia State played in the Paladins home event in 2011, finishing in third.

A week later, Georgia State will travel to the Old Waverly Bulldog Invitational, Sept. 30-Oct. 2, in Starkville, Miss. for the first time. The three-day event will be the first of the two new tournaments on the schedule. Old Waverly has hosted the U.S. Women’s Open in the past, adding to the intrigue of a new event.

“I think it is important to try and add a couple of new events each season,” Mant said. “These events generally allow us to see some new teams that we will hopefully go up against in the post-season as well as play new courses and see different parts of the country that we normally do not get to see.”

Georgia State will then return to the Lady Pirate Intercollegiate, Oct. 7-8, in Greenville, N.C. The annual event hosted by East Carolina has been successful for the Panthers in recent years, winning in 2008 and 2009, while earning a second-place finish in 2011.

The Panthers will close out the fall at the Edwin Watts/Palmetto Intercollegiate at Cougar Point Golf Club on Kiawah Island, S.C., Oct. 27-28.

“I really like the schedule we have put together this year,” Mant continued. “With a large number of returners, we wanted to make the schedule challenging, but fair, to hopefully give ourselves the best opportunity to qualify for the NCAA Regionals in May. I believe this schedule accomplishes that goal.”

The spring will begin at the UCF Challenge in Orlando,



Fla., Feb. 9-11. The event will be played at a new venue this year, hosted by Eagle Creek Golf Club. The UCF Challenge has been a popular spring-opening destination for Georgia State. Mant led the squad to a second-place finish just outside of Orlando during 2010 and this will mark the fourth year in a row competing against the former conference rivals.

After some time off the course, the Panthers will return to action March 14-16, at the JMU Eagle Landing Invitational in Orange Park, Fla. Last year, GSU finished seventh of 17 teams in a good field at Eagle Landing Country Club, just outside of Jacksonville.

The second new tournament to the schedule will come March 24-25, at the UALR Women’s Golf Classic at Diamante Country Club in Little Rock, Ark. Georgia State will face off against some its new Sun Belt Conference foes just about a month before the teams battle for the conference title in Alabama.

The Panthers will close out March and begin April (March 30-April 1) hosting the annual John Kirk Panther Intercollegiate at Eagle’s Landing Country Club in Stockbridge. It will mark the 14th time in the 21-year history of the tournament that the event is played at the former home of the LPGA’s Chick-fil-A Charity Classic.

“As always, we are looking forward to hosting a great event at Eagle’s Landing,” Mant commented. “We always have great support from members at the course and the entire staff which help us put on a first-class event. We have a good field for the event this year and I think everyone will look to close out the regular season on a high-note.”

For the first time in recent history, this year’s John Kirk Panther Intercollegiate will mark the conclusion to the regular season for Georgia State.

The Panthers will look to win another conference title and their first Sun Belt Championship in Loxley, Ala., April 14-16 at Steelwood Country Club. A win would give the Panthers the league’s automatic bid to postseason.

The NCAA Regionals will once again take place at three national sites, May 8-10. The NCAA Championship is set for Tulsa Country Club in Tulsa, Okla., May 20-23.

If everything comes together the way that Mant and the team hope, a postseason appearance should not be out of the question and last year will quickly become a thing of the past.

# MARK P. BECKER

## GSU PRESIDENT

**S**ince beginning his tenure as Georgia State University's seventh president in January 2009, President Mark P. Becker has provided a vision for the future of Georgia State University and led the institution into a period of marked growth and advancement.

Reflecting his vision of the urban public research university for the 21st century, the university adopted a dynamic 10-year strategic plan that has Georgia State well on its way to becoming one of the nation's premier urban research universities.

As a first generation college student who began his educational career at a community college, Becker is personally and professionally committed to ensuring that students of all economic backgrounds succeed and are given opportunities to compete on a level playing field. Under his leadership, Georgia State's graduation rate has already increased by 10 percent, and the university is becoming a national model for undergraduate education. It leads the nation in eliminating disparities in graduation rates based on race or ethnicity, and, as one of the most diverse universities in America, is first in the nation among non-profit institutions in graduating African-American students.

By promoting the achievements of the university, making it more visible locally and nationally, and demonstrating the value of a Georgia State degree, the university under Becker's leadership has set a series of university records for enrollment, graduation rates and total graduates. Becker has also placed high priority on ensuring financial support for students, and as a result need- and merit-based scholarship funds distributed by the university have tripled since his arrival.

Becker's passion for student success has been matched by his commitment to increasing multidisciplinary research and economic development as facilitated by the creation of new research centers, the Second Century Initiative—an ambitious program to hire one-hundred senior faculty members to serve in interdisciplinary research clusters, and an enhanced emphasis on the translation of faculty research into products and companies. This commitment has brought the university to new heights of research accomplishment, as reflected, for example, in new university records for sponsored research funding and federal research funding.

Being globally connected and engaged is another important component of Becker's

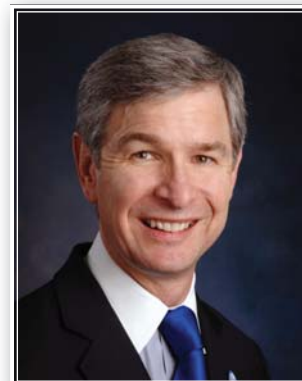
vision for the modern research university. Seeking to position Georgia State faculty and students to thrive in an increasingly complex and global landscape, Becker has worked with faculty leaders and international partners to enhance Georgia State's global profile. In 2010 the university partnered with Beijing Language and Culture University to establish a Confucius Institute with an emphasis on business and commerce. In 2012 the institute was named a "2012 Confucius Institute of the Year."

Becker is particularly committed to developing strong partnerships with universities in rapidly growing economies. As a result, the university is working to strengthen relationships with counterparts in Brazil, China, South Africa, South Korea and Turkey. These partners are the basis for the development of new student and faculty exchanges, study abroad programs, research collaborations, executive training initiatives, government and private sector networks, and dual-degree programs.

Becker has aggressively advanced the campus' physical development and revitalization of downtown Atlanta. This has included major additions to campus housing and dining, research and academic facilities, as well as intramural and athletics facilities. In 2010 the university added football to its athletics program, and in 2013 added sand volleyball and moved to the Sun Belt Conference to advance into the Division I – FBS level of NCAA competition.

Throughout his career Becker has served on boards and committees of civic, government and professional bodies. He serves, for example, on the boards of the Coalition of Urban Serving Universities, World Affairs Council of Atlanta, Georgia Chamber of Commerce, Georgia Aquarium, Georgia Research Alliance, Woodruff Arts Center, and the Atlanta Committee for Progress. He also serves on the executive committees of the Metro Atlanta Chamber of Commerce, Atlanta Regional Council for Higher Education (Chair) and Central Atlanta Progress.

Trained as a statistician, Becker has had a distinguished career in biostatistics and public



health sciences. For most of his professorial career he was a member of the faculty in the Department of Biostatistics at the University of Michigan, where he also held appointments in the Institute for Social Research, and the Department of Statistics. He was made a Fellow of the American Statistical Association, and the American Association for the Advancement of Science. Becker has been principal investigator on research grants from the National Institutes of Health and the National Science Foundation. He has published extensively in leading journals, and his doctoral students have gone on to successful careers in leading higher education institutions and with multinational companies. Becker served on multiple editorial boards, was co-editor of *Sociological Methodology*, and was a guest editor for *Sociological Methods and Research* and for the *Journal of the American Statistical Association*.

Prior to his appointment as president of Georgia State, Becker was executive vice president for academic affairs and provost at the University of South Carolina and dean of the School of Public Health and assistant vice president of Public Health Preparedness and Emergency Response at the University of Minnesota. From 1989 to 2000, Becker was a professor in the University of Michigan's School of Public Health, where he also was associate dean for academic affairs. He has held academic appointments at the University of Washington, the University of Florida and Cornell University.

Becker attended Harford (Md.) Community College, earned his bachelor's degree in mathematics from Towson State University in 1980 and his Ph.D. degree in statistics from the Pennsylvania State University in 1985. Becker grew up in Havre de Grace, Md., near Baltimore. He and his wife, Laura Voisinnet, have two adult children, Matthew and Julia.

# CHERYL L. LEVICK

## DIRECTOR OF ATHLETICS



**A** highly respected administrator with over two decades of experience guiding programs to the highest level of NCAA play, Cheryl L. Levick has successfully combined athletic and educational opportunities for students since the start of her career in collegiate athletics.

As Georgia State's Director of Athletics, Levick has helped boost the Panthers' visibility on the national stage in multiple sports while adhering to the athletic department's mission statement of shaping champions for today and leaders for tomorrow.

The transformation of the Panther Athletics Department has been remarkable under Levick. Each program has been enhanced or in the case of football, built from scratch – the program had one player, two helmets and seven coaches when she arrived in 2009. Now it is set to compete at the FBS level in just its fourth season. To make that jump in schedule and talent, Levick hired Trent Miles away from his alma mater in December 2012 after he constructed an impressive – if not totally improbable – turnaround at Indiana State.

Miles was not the first high-level coaching hire Levick successfully maneuvered for the Panthers as she also plucked Ron Hunter out of the state of Indiana in 2011. He quickly revitalized Georgia State basketball with its first postseason berth in a decade in his first year, and now has Panther fans eagerly awaiting the 2013-14 campaign.

The significant imprint Levick has created at GSU can be seen across the entire athletic department. She has put Georgia State in position to compete for league titles right off the bat as it fully moves into the Sun Belt Conference in 2013-14. Last year, GSU squads won two SBC team crowns to put the conference on notice that the Panthers are not just

moving up, but they are ready to win from the start.

Levick's tenure in sport-crazy Atlanta has been marked by significant upgrades in facilities and fundraising. Annual giving to the Panther Athletic Club (PAC) has steadily increased by more than tenfold, and the three largest gifts in the history of GSU athletics have been secured. Construction projects have included the GSU Football Practice Complex, new facilities for strength and conditioning and sports medicine, and upgrades to every venue used by the Panthers.

Arguably the most impressive project to date is the state-of-the-art facility for sand volleyball, the Panthers' most recent sport addition. It was finished in time for the inaugural season in 2013, and is part of the ambitious Athletics Master Facilities Plan that Levick developed to address needs for every sport.

Continuous success has been seen in the classroom as Georgia State student-athletes have excelled in recent years. Together, Panther student-athletes have recorded a cumulative grade-point average above 3.0 for 10 consecutive semesters while completing more than 5,000 hours of community service annually.

Levick has been a significant proponent of providing opportunities for women in college sports. She started the Women, Sports and Power Luncheon to raise money for women's sports by female donors, an event that has been successful at each of her previous stops as athletic director. The event helped raise \$50,000 for GSU women's teams in 2013.

In 2011, Levick was named a "Game Changer" among women in sports business by the SportsBusiness Journal, and she was twice (1998 and 1999) named one of the nation's Top 25 Female Sports Executives by Street & Smith's SportsBusiness Journal. The National Association of Collegiate Women Athletic Administrators (NACWAA) also named her Division I Athletic Administrator of the Year in 2001.

Levick came to Georgia State from Maryland, where she served as chief of staff/executive senior athletic director while overseeing the day-to-day management of the 27-sport program. That came after serving three years (2004-07) as director of athletics at Saint Louis, where she led the Billikens' transition to the Atlantic 10 Conference and was the lead fundraiser for an \$80 million on-campus arena and practice complex.

In four years (2000-04) as director of athletics and recreation at Santa Clara, Levick oversaw a major renovation of the school's basketball arena and saw the Broncos' women's soccer team capture the 2001 national championship. It is still the only NCAA team title in school history.

Levick spent 12 years at Stanford as senior associate athletic director and senior woman administrator. She was the primary administrator for 33 varsity programs that won 44 national championships and helped Stanford to six straight Sears Cup titles. She also served as assistant commissioner of the Pac-10 Conference, assistant director of communications and women's programs at the NCAA, women's gymnastics coach and associate athletic director at Slippery Rock, and assistant gymnastics coach and synchronized swim coach at Indiana. Levick began her career at Pattonville Senior High School in St. Louis, Mo., coaching gymnastics and women's track.

Levick is a 1974 graduate of Missouri, and holds a master's degree in athletic administration from Indiana. She has two daughters: Heather and husband Michael Klass with grandson Brady born in July 2013; and Melissa and husband Jason Lake.



**THE LEVICK FAMILY:** (from left) Michael Klass, Heather, Melissa, Jason Lake, Cheryl

# ATHLETICS STAFF



**GEORGE PIERCE**  
*Faculty Athletics Representative*



**JAMIE BOGGS**  
*Exec. Senior Associate AD - COO / SWA*



**TODD REESER**  
*Exec. Senior Associate AD - Development & Sport Services*



**ROB CLARK**  
*Senior Associate AD - Development*



**ISAAC FULLARD**  
*Senior Associate AD - External Affairs*



**JOHN PORTLAND**  
*Senior Associate AD - Internal Operations*



**DENA FREEMAN-PATTON**  
*Associate AD - Student-Athlete Develop.*



**BOB MURPHY**  
*Associate AD - Sports Medicine & Nutrition*



**JERRY TRICKIE**  
*Associate AD - Strategic Communications & P.R.*



**KEVIN WHITE**  
*Associate AD - Business*



**MISTY BROWN**  
*Assistant AD - Development & Special Events*



**ALLISON GEORGE**  
*Assistant AD - Communications*



**MATT NEWHOUSE**  
*Assistant AD - Marketing*



**ERIC PAZ**  
*Assistant AD - Compliance*



**BEN POLLARD**  
*Assistant AD - Speed, Strength & Conditioning*



**AWILDA RAGLAND**  
*Assistant AD - Human Resources*



**CHARLIE TAYLOR**  
*Assistant AD - Communications*



**STEVE WOJCIKOWSKI**  
*Assistant AD - Facilities & Operations*

# ATHLETICS MASTER FACILITIES PLAN

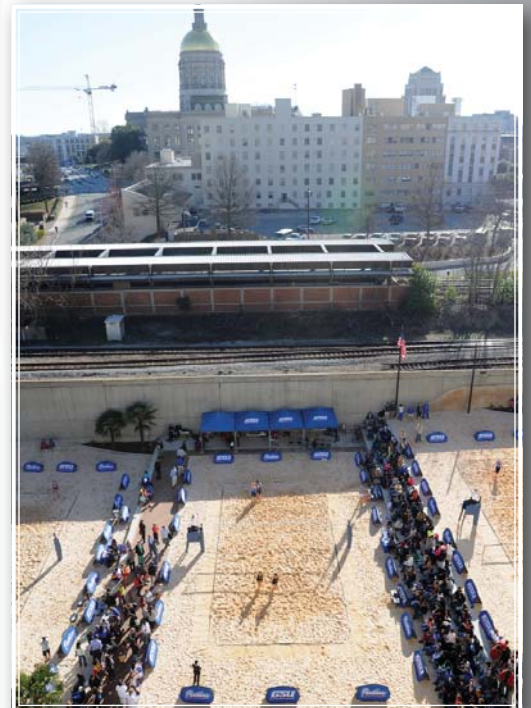
An institution on the rise, Georgia State University has a tradition of progress that is reflected in its rising stature, growing campus and broadening influence.

The Georgia State Athletics Master Facilities Plan is a blueprint for success and growth for GSU Athletics that will allow every Panther program to compete at the highest level.

By building top-notch venues for every sport, Georgia State can recruit the best student-athletes and help them develop into champions. These new facilities will also enhance the game day experience for students, alumni and fans.



The centerpiece of the Athletics Master Plan is the transformation of the GSU Sports Arena (left), the home of Panther basketball and volleyball as well as the athletics offices.



The Sand Volleyball Complex (far right), opened in 2013. The Master Plan also includes new venues for baseball (right), softball, soccer and court volleyball.





**CATHY MANT**  
 HEAD COACH  
 ARIZONA STATE 1972

As the winningest coach in Georgia State golf history, Cathy Mant has established a national presence for Panther golf during her tenure. Now in her 14th season at the helm, an appearance at the NCAA Championship is still a goal Mant hopes to achieve.

In the seven years Georgia State was a member of the Colonial Athletic Association, Mant led the Panthers to three conference championships (2010, 2009, 2006), three conference runner-up finishes (2011, 2007, 2008), and four NCAA Regional berths (2010, 2009, 2008, 2006).

In addition, Mant was named CAA Coach of the Year four times in seven seasons (2010, 2009, 2008, 2006). Mant holds the distinction of being named CAA Coach of the Year more times than any other coach in conference history. In 2009, Mant added another award to her growing list of accolades as she was named NGCA East Region Coach of the Year.

Over 13 seasons at Georgia State, Mant has amassed 21 team tournament victories, 20 individual medalist honors, won five conference titles, made eight NCAA Regional appearances (six team, two individual), and picked up six coach of the year awards as the first and only full-time women's golf coach in school history.

She has also watched 27 members of her squads earn all-conference recognition. As proud as she is of everything the team has accomplished on the course, she is equally as proud of the work off the course. Once again last year, the women's golf team earned GSU's highest team GPA award, handed out annually at the end of the year banquet.

Mant was named Georgia State's first full-time women's golf coach in September of 2000 and set immediate expectations for developing a nationally successful program at that point.

Under Mant's tutelage, the program has produced four conference players of the year and seven individual conference champions. With her leadership and guidance, Mant helped Joanna Klatten become GSU's first women's golfer to qualify and compete in the NCAA National Championship in 2006.

Mant's team made its best run toward the NCAA Championship in 2008-09 when it climbed as high as 27th in the national rankings, posting a school-record six wins. With a CAA Championship victory, the Panthers traveled to the NCAA East Regional



## Georgia State Golf Under Cathy Mant

| Accomplishment                  | No. | Years                  |
|---------------------------------|-----|------------------------|
| Conference Champions            | 5   | 2003, 2005-06, 2009-10 |
| Conference Medalists            | 8   | 2003-06, 2008, 2010-12 |
| Conference Runners-Up           | 4   | 2004, 2007-08, 2011    |
| NCAA Championship Berth         | 1   | 2006 (Individual)      |
| NCAA Regional Berth             | 6   | 2003, 2005-06, 2008-10 |
| Conference Coach of the Year    | 6   | 2003, 2005-06, 2008-10 |
| NGCA Regional Coach of the Year | 1   | 2009                   |
| Conference Player of the Year   | 5   | 2005-06, 2008, 2010-11 |
| Conference Rookie of the Year   | 3   | 2008-09, 2012          |
| Conference Tournament M.O.P     | 3   | 2008, 2010-11          |





*Mant has helped GSU secure five conference championship trophies: three from the Colonial Athletic Association and two from the Atlantic-Sun*

a tradition that now includes Joanne Carner, Heather Farr and Danielle Ammaccapane.

After her collegiate days came to an end, Mant played on the LPGA Tour from 1976 to 1986. Mant's best finish on the Tour was third at the Rail Charity Championship in Springfield, Ill. She played in 10 United States Women's Opens, as well as each major on the LPGA Tour. Mant was highly involved in the LPGA player government and served as a player representative to the LPGA Board of Directors as well as the President of the LPGA Tournament Division in 1985.

When she finished her LPGA career, Mant decided to devote her time and energy to a full-time teaching career. She developed a strong following of students, many of whom have gone on to play collegiate golf at such universities as Stanford, Southern California, Oregon, Arizona State, Tennessee, San Jose State, and Ohio State. Mant is a Class A member of both the LPGA Tour,

the Teaching and CP Division, and has served on the United States Girls' Junior Committee. Mant continues to teach at Eagle's Landing Country Club, home of the John Kirk Panther Intercollegiate. In 2002, Mant was named one of Golf For Women's "Top 50 Teachers."

Mant is also a member of the Golf Coaches Hall of Fame, an induction that came in 1989. In 1999, Mant co-authored "Golf Coaches Guide to Success," a manuscript designed to help high school golf coaches prepare members of their golf teams for the college golf experience.

Mant was born in Seattle, Wash., and grew up in Eugene, Ore. Cathy and her husband, Rick Mant, have a daughter, Ashley, who is married to Georgia State alum Charlie Cash, and a grandson named Rhett Steven. Mant received her Bachelor of Science degree in marketing from Arizona State in 1972.

where they finished ninth of 21, just one spot shy of qualifying for the school's first trip to the NCAA Championship.

One of Mant's largest areas of focus is the short game, believing strong short play allows the Panthers to consistently compete at the top level. Mant regularly works with Georgia State's golfers on firming old technique and introducing new short shots. She also devotes time to the mental aspects of the game and course management, a subject she feels most amateur golfers do not completely understand and often ignore in practice time.

Her collegiate golfing career reached its pinnacle in 1970, when Mant won the individual title of what was then called the Division of Girls and Women's Sports Championship, now known as the NCAA Women's Golf Championship.

Accompanying that victory at Arizona State, Mant was named a Collegiate All-American and was inducted into the Arizona State University Sports Hall of Fame in 1999. Mant helped continue a strong tradition of success in the Sun Devils' program,

## TEAM VICTORIES

|              |           |
|--------------|-----------|
| 2012-13      | 0         |
| 2011-12      | 0         |
| 2010-11      | 0         |
| 2009-10      | 3         |
| 2008-09      | 6         |
| 2007-08      | 2         |
| 2006-07      | 1         |
| 2005-06      | 2         |
| 2004-05      | 4         |
| 2003-04      | 1         |
| 2002-03      | 1         |
| 2001-02      | 1         |
| 2000-01      | 0         |
| <b>TOTAL</b> | <b>21</b> |

## MEDALIST HONORS

|              |           |
|--------------|-----------|
| 2012-13      | 0         |
| 2011-12      | 4         |
| 2010-11      | 1         |
| 2009-10      | 2         |
| 2008-09      | 3         |
| 2007-08      | 2         |
| 2006-07      | 0         |
| 2005-06      | 2         |
| 2004-05      | 3         |
| 2003-04      | 1         |
| 2002-03      | 1         |
| 2001-02      | 1         |
| 2000-01      | 0         |
| <b>TOTAL</b> | <b>20</b> |

## CONFERENCE HONORS

|              |           |
|--------------|-----------|
| 2012-13      | 1         |
| 2011-12      | 2         |
| 2010-11      | 2         |
| 2009-10      | 3         |
| 2008-09      | 4         |
| 2007-08      | 3         |
| 2006-07      | 3         |
| 2005-06      | 2         |
| 2004-05      | 3         |
| 2003-04      | 1         |
| 2002-03      | 2         |
| 2001-02      | 2         |
| 2000-01      | 1         |
| <b>TOTAL</b> | <b>29</b> |



## SUPPORT STAFF



*Back Row (L to R): Solveig Helgesen, Solene Le Coz, Lauren Court, Julie Lied, head coach Cathy Mant  
Front Row (L to R): Maria Palacios, Laura Sanchez, Melissa Siviter, Joeeun Bae*

## SUPPORT STAFF



**DUSTY BENNETT**  
Senior Academic Advisor



**MIKE HOLMES**  
Associate Sports  
Communications Director



**DINIKA JOHNSON**  
Head Athletic Trainer



**DEVIN VERNICK**  
Assistant Strength  
& Conditioning Coach



# GEORGIA STATE WOMEN'S GOLF

*LAURA SANCHEZ*  
*THREE-TIME NGCA ALL-AMERICAN SCHOLAR*

# PLAYERS



## SOLVEIG HELGESEN

Sr. / 5-9

HAGAVIK, NORWAY/NORWEGIAN SCHOOL OF TOP ATHLETES

### AT GEORGIA STATE

In three seasons with the Panthers, has competed in 21 tournaments, garnering a pair of top-20 finishes, including a career-best tie for eighth at the John Kirk Panther Intercollegiate last season . . . Has a career 80.17 scoring average in 63 rounds of play.

### 2012-13

Competed in the final three events of the season for Georgia State, putting together an average finish of 25th . . . In first tournament of the year, finished tied for eighth at the GSU hosted John Kirk Panther Intercollegiate, which was highlighted by a second-round 75 . . . Tied for 30th at the UNCW Seahawk Challenge, shooting a final-round 78 . . . Opened the Sun Belt Championship with a first round 74, her lowest score of the season . . . Finished the year with a 78.80 scoring average, fourth best on the team.

### 2011-12

Played in eight tournaments on the year . . . Fired a career-low round of 3-under 69 in the final round of the Lady Pirate Intercollegiate, where she also recorded her best finish of the season with a share of 26th place and her best tournament score with a three-round total of 225 . . . Maintained a stroke average of 81.50 for the year . . . Struggled during the spring as she worked through swing changes . . . Outstanding student who was named to the Dean's List while earning a spot on Georgia State's All-Academic Team . . . 2012 WGCA All-American Scholar.

### 2010-11

Competed in all 10 of the Panthers' tournaments . . . Recorded a tournament-best 231 in her final performance of the season at the CAA Championship, finishing tied for 11th place . . . Shot a season-low 74 in the opening round of the CAA Championship as well as in the second round of the Mercedes-Benz Collegiate Championship . . . Finished the regular season ranked 21st among all golfers in the CAA . . . Named a WGCA All-American Scholar . . . Earned a spot on the President's List fall semester and Dean's List spring semester.

### AMATEUR

Began playing at age 11 and competed throughout Europe as an amateur . . . Member of the Norwegian National Team from 2004-10 . . . Before her second season at GSU in 2010, placed first in the 2011 Norwegian Ladies Amateur Championship and second place in the Miklagard Open and Callaway Borre Open, both events in the Norges Cup, the highest level of competition in Norway . . . Competed in multiple championships including the European Girls' Team Championship and the Norwegian Team Championship . . . Named the 2009 Norwegian Junior Champion . . . Qualified for the 2010 Esmond Trophy . . . Garnered eight top three Titleist Tour finishes.

### PREP

Attended the Norwegian School of Top Athletes where she earned the honor of second-best academic senior . . . Earned several "Player of the Year" awards at her home club, Bjornetjorden GK . . . Joined the Panthers with a +.08 handicap.

### PERSONAL

Solveig Agnete Tveit Helgesen was born on Nov. 13, 1991 in Bergen, Norway . . . She is the daughter of Sigurd and Bjorg Helgesen . . . Has two older brothers, Karl Fredrik and Thomas . . . Currently majoring in accounting.



## CAREER TOURNAMENT RESULTS

### 2012-13

John Kirk Panther Intercollegiate 78-75-82--235 t8th/76  
 UNCW Seahawk Challenge 79-84-78--241 t30th/74  
 Sun Belt Championship 74-79-81--245 36th/55  
 Tournaments: 3; Rounds: 9; Strokes: 710; Season Avg.: 78.80

### 2011-12

Golfweek Challenge 82-79-76--237 t57th/90  
 UNCG Starmount Classic 82-80-81--243 t51st/75  
 Lady Pirate Intercollegiate 77-79-69--225 t26th/104  
 Lady Paladin Invitational 82-84-83--249 t48th/81  
 Hurricane Invitational 83-84-94--261 t80th/86  
 SunTrust Gator Invitational 87-82-83--252 90th/93  
 Knights & Pirates Invitational 80-83-79--242 t74th/87  
 CAA Championship 87-82-78--247 t36th/53  
 Tournaments: 8; Rounds: 24; Strokes: 1,956; Season Avg.: 81.50

### 2010-11

Dick McGuire Invitational 78-79-79--236 t59th/92  
 William K. Warren Irish Invit. 82-81-79--242 t55th/74  
 Mercedes-Benz Collegiate 80-74-82--236 t70th/83  
 Paladin Invitational 81-83-80--244 t48th/90  
 UCF Challenge 78-79-80--237 t72nd/92  
 Kinderlou Forest Challenge 83-81-80--244 65th/74  
 Lady Gator Invitational 81-80-83--244 82nd/90  
 John Kirk Panther Intercollegiate 80-80-78-238 t49th/81  
 Liz Murphey Championship 77-78-78-233 t73rd/120  
 CAA Championship 74-80-77--231 t11th/50  
 Tournaments: 10; Rounds: 30; Strokes: 2,385; Season Avg.: 79.50

## CAREER HIGHLIGHTS

**Lowest Score:** 69 - 2011 Lady Pirate Intercollegiate  
**Best Finish:** 8th - 2013 John Kirk Panther Intercollegiate  
**Low Tournament Score (3 Rds.):** 225  
 - 2011 Lady Pirate Intercollegiate  
**Best 1st Rd.:** 74 - 2013 Sun Belt Championship  
 - 2011 CAA Championship  
**Best 2nd Rd.:** 74 - 2010 Mercedes-Benz Collegiate  
**Best 3rd Rd.:** 69 - 2011 Lady Pirate Intercollegiate  
**Top-5 Finishes:** 0  
**Top-10 Finishes:** 1  
**Top-20 Finishes:** 2  
**Tournaments:** 21  
**Rounds:** 63  
**Strokes:** 5,051  
**Career Stroke Average:** 80.17



# PLAYER PROFILES



## MARIA PALACIOS

SR. / 5-5

CASTELLON, SPAIN/WESTERN TEXAS COLLEGE

### 2012-13

In her first year at Georgia State, played in all 10 tournaments, tying for the team lead with a 76.70 scoring average . . . Finished tied for 11th in her GSU debut at the Cardinal Cup, that included a season-low 69 in the second round . . . Tied for 24th of 104 golfers at the rain-shortened Lady Pirate Intercollegiate, shooting 76 . . . Recorded a tie for 15th at the GSU hosted John Kirk Panther Intercollegiate, shooting a second-round 76 in cold and windy conditions . . . Scored a career-best tie for seventh finish at the UNCW Seahawk Classic after opening the event with a 72.

### 2010-11 (WESTERN TEXAS)

Ranked fourth in the national junior college rankings for the 2011-12 season . . . Finished sixth at the 2012 NJCAA National Championship, shooting 80-78-75-74 . . . Won the NJCCA Regional, shooting 69-75 . . . Tied for third at the UMHB Invitational, shooting 75-77 while leading the team to victory . . . Led Western Texas to the team title at the Bluebonnet Classic, shooting 78-74 en route to a sixth-place finish . . . Tied for sixth at the Oklahoma Collegiate, shooting 75-73 as Western Texas finished second.

### AMATEUR

Won the 2013 Valencia Cup in Spain, shooting 70-74-72 . . . Winner of Copa de la Comunidad Valenciano.



### PERSONAL

Maria Palacios was born Oct. 20, 1990 in Granada, Spain ... She is the daughter of Juan and Rebecca Palacios ... Has two older brothers, Juan and Marcelo, and one twin sister, Rebeca ... Majoring in psychology.

### CAREER TOURNAMENT RESULTS

#### 2012-13

|                                   |               |           |
|-----------------------------------|---------------|-----------|
| Cardinal Cup                      | 75-69-79--223 | t11th/87  |
| Golfweek Conference Challenge     | 77-76-80--233 | t58th/90  |
| Lady Pirate Intercollegiate       | 76--76        | t24th/104 |
| Edwin Watts/Palmetto Inter.       | 79-74-75--228 | t39th/95  |
| UCF Challenge                     | 76-78-75--229 | t59th/99  |
| JMU Eagle Landing Invitational    | 73-74-76--223 | t16th/97  |
| Insperty Lady Jaguar Invitational | 84-79-74--237 | t56th/99  |
| John Kirk Panther Intercollegiate | 81-76-82--239 | t15th/76  |
| UNCW Seahawk Classic              | 72-77-76--225 | t7th/74   |
| Sun Belt Championship             | 76-83-75--234 | t32nd/55  |

Tournaments: 10; Rounds: 28; Strokes: 2,147; Season Avg.: 76.70

### CAREER HIGHLIGHTS

**Lowest Score:** 69 - 2012 Cardinal Cup

**Best Finish:** 7th - 2013 John Kirk Panther Intercollegiate

**Low Tournament Score (3 Rds.):** 223

- 2013 JMU Eagle Landing Invitational

**Best 1st Rd.:** 72 - 2012 UNCW Seahawk Classic

**Best 2nd Rd.:** 69 - 2012 Cardinal Cup

**Best 3rd Rd.:** 74 - 2013 Insperty Lady Jaguar Invitational

**1st-5th Finishes:** 0

**6th-10th Finishes:** 1

**11th-20th Finishes:** 3

**Total Top-20 Finishes:** 4

**Tournaments:** 10

**Rounds:** 28

**Strokes:** 2,147

**Career Stroke Average:** 76.70





## MELISSA SIVITER

Sr. / 5-3

COSELEY, ENGLAND/BELMONT ABBEY COLLEGE

### 2012-13

In her first year at Georgia State, played in all 10 tournaments, finishing the year with the third-lowest scoring average on the team, 78.60 . . . Opened the year with rounds of 74 and 76 at the Cardinal Cup . . . Finished the year strong with three-straight top-25 finishes . . . Tied for 12th at the GSU-hosted John Kirk Panther Intercollegiate, shooting a final-round 74 . . . Tied for seventh, a career-best finish, at the UNCW Seahawk Classic, firing book-end rounds of 76 . . . Tied for 23rd at the Sun Belt Championship, finishing the year with a career-low 73 on the Robert Trent Jones-Fighting Joe Course in Muscle Shoals, Ala.

### 2009-11 (BELMONT ABBEY)

Named 2010 Conference Carolinas Freshman-of-the-Year . . . Helped lead Belmont Abbey to consecutive conference championships by earning medalist honors at the 2010 and 2011 Conference Carolinas Championship . . . Earned all-conference first team recognition. . . Champion of the 2010 Tusculum College Women's Invitational at Kiawah Island . . . Garnered five top-10 finishes during her freshman season and seven as a sophomore.

### AMATEUR

Qualified for the 2013 United States Women's Amateur in Charleston, S.C. after shooting 74 in the qualifier at Dalton Golf & Country Club. Shot 82-80 in the championship, making it two years in a row a Panther qualified for the event . . . Tied for second,

shooting 73 in the stroke play portion of the 2013 GSGA Women's Match Play Championship before advancing to the round of eight . . . Shot 80-74 to just miss the cut at the 2013 Women's North & South Classic at Pinehurst.

### PERSONAL

Melissa Victoria Siviter was born July 15, 1990 in Wolverhampton, England . . . She is the daughter of Phillip and Pam Siviter . . . Has one older brother, James . . . Majoring in sociology.

### CAREER TOURNAMENT RESULTS

#### 2012-13

|   |               |           |
|---|---------------|-----------|
| Cardinal Cup  | 74-76-81--231 | t39th/87  |
| Golfweek Conference Challenge                                   | 79-81-77--237 | t66th/90  |
| Lady Pirate Intercollegiate                                     | 80--80        | t66th/104 |
| Edwin Watts/Palmetto Inter.                                     | 79-81-80--240 | t78th/95  |
| UCF Challenge   | 76-82-83--241 | t94th/99  |
| JMU Eagle Landing Invitational                                  | 78-77-76--231 | t43rd/97  |
| Insperity Lady Jaguar Invitational                              | 83-78-81--242 | t69th/99  |
| John Kirk Panther Intercollegiate                               | 85-79-74--238 | t12th/76  |
| UNCW Seahawk Classic  | 76-78-76--230 | t7th/74   |
| Sun Belt Championship   | 77-80-73--230 | t23rd/55  |
| Tournaments: 10; Rounds: 28; Strokes: 2,200; Season Avg.: 78.60 |               |           |

### CAREER HIGHLIGHTS

**Lowest Score:** 73 - 2013 Sun Belt Championship  
**Best Finish:** 7th - 2013 UNCW Seahawk Classic  
**Low Tournament Score (3 Rds.):** 230  
 - 2013 UNCW Seahawk Classic  
 - 2013 Sun Belt Championship  
**Best 1st Rd.:** 74 - 2012 Cardinal Cup  
**Best 2nd Rd.:** 76 - 2012 Cardinal Cup  
**Best 3rd Rd.:** 73 - 2013 Sun Belt Championship  
**1st-5th Finishes:** 0  
**6th-10th Finishes:** 1  
**11th-20th Finishes:** 1  
**Total Top-20 Finishes:** 2  
**Tournaments:** 10  
**Rounds:** 28  
**Strokes:** 2,200  
**Career Stroke Average:** 78.60





**Laura Sanchez**

Sr. / 5-2

Bogota, Colombia/Gimnasio Aleman Friedrich von Shiller

## AT GEORGIA STATE

In three seasons with the Panthers, has competed in all 30 tournaments, garnering seven top-20 finishes, including a career-best fourth at the John Kirk Panther Intercollegiate last season . . . Has a career 78.10 scoring average in 88 rounds of play.

## 2012-13

Played in all 10 events for GSU, finishing the year with a 76.70 scoring average, tied for best on the team . . . Saved her best golf for the final three tournaments of the year, never finishing outside of the top 12 . . . Earned a career-best fourth-place finish at the GSU-hosted John Kirk Panther Intercollegiate, shooting a second-round 74 in blustery conditions . . . Finished sixth at the UNCW Seahawk Classic, shooting a final-round 72, just one stroke off of tying a career-low . . . Ended the year with a tied for 12th at the Sun Belt Championship, shooting back-to-back 73s to finish the tournament . . . Opened the year with a second-round 72 at the Cardinal Cup . . . Tied a career-low with a final-round 71 at the Golfweek Conference Challenge . . . Named a WGCA All-American Scholar.

## 2011-12

Played in all 10 of Georgia State's tournaments in 2011-12 . . . Equalled her career-low score of one-under 71 in the first-round of the Lady Pirate Intercollegiate . . . Added a 72 on the final day of the Lady Pirate for a three-round total of 222, which also equalled her career-low at the time and gave her a share of 15th place for her best finish of the season . . . Shot 72 in the second-round of the John Kirk Panther Intercollegiate . . . Finished 25th at the CAA Championship and 27th at the Hurricane Invitational . . . Named an WGCA All-American Scholar . . . Named to the Athletic Director's Honor Roll.

## 2010-11

Competed in all 10 of the Panthers' tournaments and compiled a 78.23 scoring average . . . Recorded her tournament-best score of 222 in the 2010 Mercedes-Benz Collegiate Championship . . . Fired her career-low 71 in the second round of Georgia

State's home tournament, the John Kirk/Panther Intercollegiate . . . Garnered three top-20 finishes, T13th in the 2011 CAA Championship, T18th in the 2011 John Kirk/Panther Intercollegiate and T19th in the 2010 William K. Warren Irish Invitational . . . Finished the regular season ranked No. 16 among all golfers in the CAA . . . Named a WGCA All-American Scholar . . . Named to the Dean's List fall and spring semesters.

## AMATEUR

Just missed the cut at the 2013 Women's North & South Classic at Pinehurst, shooting 81-73 . . . Qualified for the 2012 U.S. Women's Amateur at the Country Club in Cleveland, Ohio . . . Advanced to the event after qualifying at GSU's home course, Eagle's Landing, in which she birdied the second hole of a playoff to earn the final spot . . . Winner of the 2009 Campeonato Nacional Prejuvenil y Juvenil Copa Arturo Calle . . . Winner of the Campeonato Internacional Juvenil . . . Runner-up in the Torneo Selectivo a la Copa los Andes . . . Earn an 11th place finish in the Doral Publix Junior Golf Classic . . . Competed in three events in her native Colombia during the summer of 2011, taking fifth place at the Pereira Open, fourth place at the Bucaramanga Open and third in the Colombian Open.

## PREP

Attended Gimnasio Aleman Friedrich von Shiller . . . Started playing golf at the age of nine . . . Competed internationally throughout South America . . . Played tournaments in the U.S. such as the Doral Publix Junior Golf Classic and the Junior World in San Diego.

## PERSONAL

Laura Sanchez was born in Bogota, Colombia on Jan. 25, 1992 . . . She is the daughter Jorge Sanchez and Beatriz Zuluaga . . . Has one younger brother, Simon . . . Her favorite athletes are Tiger Woods, Roger Federer and Lorena Ochoa . . . Majoring in finance.



## CAREER TOURNAMENT RESULTS

### 2012-13

|   |               |           |
|---|---------------|-----------|
| Cardinal Cup  | 81-72-77--230 | t33rd/87  |
| Golfweek Conference Challenge                                   | 80-77-71--228 | t36th/90  |
| Lady Pirate Intercollegiate                                     | 84--84        | t86th/104 |
| Edwin Watts/Palmetto Inter.                                     | 78-74-75--227 | t32nd/95  |
| UCF Challenge   | 78-74-79--231 | t66th/99  |
| JMU Eagle Landing Invitational                                  | 75-80-78--233 | t59th/97  |
| Insperty Lady Jaguar Invitational                               | 77-80-79--236 | t50th/99  |
| John Kirk Panther Intercollegiate                               | 81-74-75--230 | 4th/76    |
| UNCW Seahawk Classic  | 77-75-72--224 | 6th/74    |
| Sun Belt Championship   | 77-73-73--224 | t12th/55  |
| Tournaments: 10; Rounds: 28; Strokes: 2,147; Season Avg.: 76.70 |               |           |

### 2011-12

|   |               |           |
|---|---------------|-----------|
| Golfweek Challenge  | 77-81-75--233 | t43rd/90  |
| UNCG Starmount Classic  | 81-82-79--242 | t45th/75  |
| Lady Pirate Intercollegiate                                     | 71-79-72--222 | t15th/104 |
| Lady Paladin Invitational                                       | 84-78-83--245 | 40th/81   |
| UCF Challenge   | 77-83-79--239 | t90th/99  |
| Hurricane Invitational  | 77-75-84--236 | t27th/86  |
| SunTrust Gator Invitational                                     | 75-78-88--239 | t79th/93  |
| John Kirk Panther Intercollegiate                               | 87-72-80--239 | t45th/62  |
| Knights & Pirates Invitational                                  | 86-79-80--245 | t79th/87  |
| CAA Championship  | 81-82-76--239 | t25th/53  |
| Tournaments: 10; Rounds: 30; Strokes: 2,379; Season Avg.: 79.30 |               |           |

### 2010-11

|   |               |            |
|---|---------------|------------|
| Dick McGuire Invitational                                       | 80-80-77--237 | t65th/92   |
| William K. Warren Irish Invit.                                  | 82-73-77--232 | t19th/74   |
| Mercedes-Benz Collegiate  | 75-74-73--222 | t30th/83   |
| Paladin Invitational  | 82-84-81--247 | t60th/90   |
| UCF Challenge   | 74-80-72--236 | t69th/92   |
| Kinderlou Forest Challenge                                      | 76-80-76--232 | 30th/74    |
| Lady Gator Invitational   | 80-74-74--238 | t67th/90   |
| John Kirk Panther Intercollegiate                               | 82-71-74-227  | t18th/81   |
| Liz Murphey Championship  | 84-80-80-244  | t110th/120 |
| CAA Championship  | 80-73-79--232 | t13th/50   |
| Tournaments: 10; Rounds: 30; Strokes: 2,347; Season Avg.: 78.20 |               |            |

## CAREER HIGHLIGHTS

**Lowest Score:** 71 - 2012 Golfweek Conference Challenge  
- 2011 Lady Pirate Intercollegiate

**Best Finish:** 4th - 2013 John Kirk Panther Intercollegiate

**Low Tournament Score (3 Rds.):** 225

- 2010 Mercedes-Benz Collegiate

**Best 1st Rd.:** 71 - 2011 Lady Pirate Intercollegiate

**Best 2nd Rd.:** 71 - 2011 John Kirk Panther Intercollegiate

**Best 3rd Rd.:** 71 - 2012 Golfweek Conference Challenge

**Top-5 Finishes:** 2

**Top-10 Finishes:** 2

**Top-20 Finishes:** 7

**Tournaments:** 30

**Rounds:** 88

**Strokes:** 6,873

**Career Stroke Average:** 78.10



# PLAYER PROFILES



**LAUREN COURT**

JR. / 5-8

LAWRENCEVILLE, GA./COLLINS HILL HS

## 2012-13

Played in five tournaments, including all four fall events . . . Shot a first-round 74 at the Golfweek Conference Challenge, her low round of the year en route to a tie for 52nd . . . Finished the season with an 81.70 scoring average.

## 2011-12

Named 2012 CAA Rookie of the Year after compiling a 78.70 scoring average . . . Competed in all 10 tournaments during her freshman year, earning a pair of top-25 finishes . . . In second career event, tied for 25th at the UNCG Starmount Classic . . . Shot a career-low 72 in the second round of the SunTrust Gator Invitational en route to a tie for 31st . . . Finished year with a tie for 22nd at the CAA Championship . . . Named to the Athletic Director's Honor Roll.

## AMATEUR

Finished tied for 15th in the stroke play portion of the GSGA Women's Match Play Championship, advancing to the round of 16 before losing to teammate Melissa Siviter . . . Made the semi-finals of the GSGA's 2011 Women's Match Play Championship . . . Tied for fourth in GSGA's 2011 Top 60 Women's Classic . . . Took 13th place in the PGA's 2011 Georgia Women's Open . . . Tied for fifth at the 2010 Georgia Women's Amateur . . . During 2009 and 2010, collected a total of four wins, five runner-up finishes and six other top-5's while competing on the Canogate Junior Tour, Southeastern Junior Tour and Georgia Junior PGA.

## PREP

While at Collins Hill High School, earned the Eagle Award all four years as the top female golfer . . . Gwinnett Daily Post's Super Six final three years of high school . . . Earned medalist honors at the 2010 Girls State 5A Championship and the 2011 7-5A Regionals . . . Named to the 2010 Georgia All-State High School team . . . Held the girls' 9-hole and 18-hole record at Collins Hill with 35 and 73, respectively.

## PERSONAL

Lauren Court was born Feb. 2, 1993 . . . She is the daughter of Doug and Cyndi Court . . . Has an older sister, Kristen, and a younger brother, Aaron . . . Majoring in marketing.

## CAREER TOURNAMENT RESULTS

### 2012-13

|   |               |           |
|---|---------------|-----------|
| Cardinal Cup  | 77-82-84--243 | t73rd/87  |
| Golfweek Conference Challenge                                 | 74-82-76--232 | t52nd/90  |
| Lady Pirate Intercollegiate                                   | 81--81        | t66th/104 |
| Edwin Watts/Palmetto Inter.                                   | 83-81-85--249 | t90/95    |
| John Kirk Panther Intercollegiate                             | 85-88-84--257 | 64th/76   |
| Tournaments: 5; Rounds: 13; Strokes: 1,062; Season Avg.: 81.7 |               |           |

### 2011-12

|  |               |           |
|--|---------------|-----------|
| Golfweek Challenge   | 79-84-81--244 | t75th/90  |
| UNCG Starmount Classic   | 77-78-80--235 | t25th/75  |
| Lady Pirate Intercollegiate                                    | 76-80-76--232 | t52nd/104 |
| Lady Paladin Invitational                                      | 78-88-84--250 | t52nd/81  |
| UCF Challenge  | 76-80-81--237 | t85th/99  |
| Hurricane Invitational   | 80-77-80--237 | t31st/86  |
| SunTrust Gator Invitational                                    | 77-72-76--226 | t31st/93  |
| John Kirk Panther Intercollegiate                              | 79-75-84--238 | t43rd/62  |
| Knights & Pirates Invitational                                 | 73-77-77--227 | t32nd/87  |
| CAA Championship   | 78-82-77--237 | t22nd/53  |
| Tournaments: 10; Rounds: 30; Strokes: 2,362; Season Avg.: 78.7 |               |           |

## CAREER HIGHLIGHTS

**Lowest Score:** 72 - 2012 SunTrust Gator Invitational

**Best Finish:** 22nd- 2012 CAA Championship

**Low Tournament Score (3 Rds.):** 226

- 2012 SunTrust Gator Invitational

**Best 1st Rd.:** 73 - 2012 Knights & Pirates Invitational

**Best 2nd Rd.:** 72 - 2012 SunTrust Gator Invitational

**Best 3rd Rd.:** 76 - 2012 Golfweek Conference Challenge

- 2011 Lady Pirate Invitational

- 2012 SunTrust Gator Invitational

**1st-5th Finishes:** 0

**6th-10th Finishes:** 0

**11th-20th Finishes:** 0

**Total Top-20 Finishes:** 0

**Tournaments:** 15

**Rounds:** 43

**Strokes:** 3,424

**Career Stroke Average:** 79.63





**JULIE LIED**  
So. / 5-5  
BERGEN, NORWAY/WANG ATHLETICS

## 2012-13

In her first year at GSU, played in all 10 events, finishing the year with a 78.90 scoring average, fourth-best on the team . . . Shot a career-low 71 in just her second career tournament, the Golfweek Conference Challenge . . . Tied for 26th at the JMU Eagle Landing Invitational, shooting back-to-back 75s to finish the event . . . Ended the year with a 29th-place finish at the Sun Belt Championship where she opened the tournament with a 76.

## AMATEUR/PREP

Placed first (2010), third (2011) and second (2010) at the Norwegian Cup . . . Was one of three girls on the Norwegian National Team in 2011 . . . Placed second (2009 & 2011) and fourth (2012) on the Titleist Tour . . . Received "Junior Scholarship of the Year" award in 2009 from the Federation in Norway . . . Finished in first place at the Suzann Pettersen Junior Challenge.

## PERSONAL

Julie Christine Lied was born Dec. 25, 1993, in Bergen, Norway . . . She is the daughter of Morten and Lisbeth Lied . . . Has two younger sisters, Lisa and Othilie . . . Currently majoring in business.



## CAREER TOURNAMENT RESULTS

### 2012-13

|                                    |               |           |
|------------------------------------|---------------|-----------|
| Cardinal Cup                       | 83-75-85--243 | t73rd/87  |
| Golfweek Conference Challenge      | 80-80-71--231 | t49th/90  |
| Lady Pirate Intercollegiate        | 86--86        | t95th/104 |
| Edwin Watts/Palmetto Inter.        | 79-77-80--236 | t68th/95  |
| UCF Challenge                      | 74-78-75--227 | t50th/99  |
| JMU Eagle Landing Invitational     | 77-75-75--227 | t26th/97  |
| Inspirity Lady Jaguar Invitational | 81-77-79--237 | t56th/99  |
| John Kirk Panther Intercollegiate  | 81-79-93--253 | t56th/76  |
| UNCW Seahawk Classic               | 81-84-77--242 | t48th/74  |
| Sun Belt Championship              | 76-79-77--232 | 29th/55   |

Tournaments: 10; Rounds: 28; Strokes: 2,209; Season Avg.: 78.90

## CAREER HIGHLIGHTS

**Lowest Score:** 71 - 2012 Golfweek Conference Challenge

**Best Finish:** 26th - 2013 JMU Eagle Landing Invitational

**Low Tournament Score (3 Rds.):** 227

- 2013 UCF Challenge

- 2013 JMU Eagle Landing Invitational

**Best 1st Rd.:** 74 - 2013 UCF Challenge

**Best 2nd Rd.:** 75 - 2012 Cardinal Cup

- 2013 JMU Eagle Landing Invitational

**Best 3rd Rd.:** 71 - 2012 Golfweek Conference Challenge

**1st-5th Finishes:** 0

**6th-10th Finishes:** 0

**11th-20th Finishes:** 0

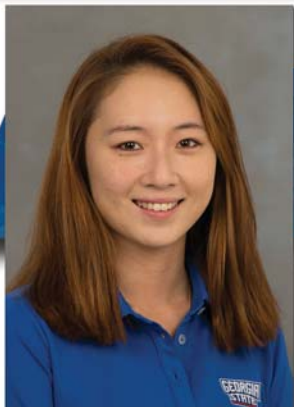
**Total Top-20 Finishes:** 0

**Tournaments:** 10

**Rounds:** 28

**Strokes:** 2,209

**Career Stroke Average:** 78.90



**JODEUN BAE**

FR. / 5-7

SEOUL, SOUTH KOREA/IMG ACADEMY

## AMATEUR

Garnered six top-10 finishes on the HJGT (Hurricane Junior Golf Tour), including a second-place finish at the HJGT Championship, shooting 76-77 for a second-place finish in 2010 . . . Finished tied for 13th with a pair of 77s in the 2013 HJGT Championship . . . Finished fourth in the HJGT Northeast Florida Junior Open with a second-round 76 and second at the HJGT 5th Anniversary Kick-off at Amelia Island . . . On the IMG Junior Golf Tour, finished second at the Southern Hills Plantation Club event and fifth at the Marriott Grande Pines tournament, with an eighth-place finish at the World Golf Village . . . Also earned a seventh-place finish at the AJGA's Prairie Landing tournament and eighth at the FCWT's Plantation Inn Golf Resort & Spa event.

## PERSONAL

Joo eun Bae was born March 4, 1994 in Jinju, Kyeongsangnamdo, South Korea . . . She is the daughter of Okyi Kim and Jong Yong Bae . . . Has an older sister, Daeun . . . Planning to major in art.





## SOLENE LE COZ

FR. / 5-7

LE RAINCY, FRANCE/LYCEE ALBERT SCHWEITZER

### AMATEUR

Played throughout Europe while attending Lycee Albert Schweitzer High School in Le Raincy, France, just outside of Paris . . . In nine tournaments in 2013, compiled a 76.4 scoring average, including a round of 70 in the French International Championship at Saint Cloud . . . Finished 14th in the Italian International Ladies Championship and won the Paris Region Championship . . . In 2012, was a member of the Ozoir Golf Club team championship second division, before moving to the Racing Club de France La Boulie, which went on to win the French Championship in 2013 . . . In 2009, played in the U17 French Championship, shooting 69 at Saint Cloud and then in 2011, shot 71 at Chantilly Vineuil (Old Course) in the French Ladies Championship.

### PERSONAL

Solene Le Coz was born Aug. 14, 1995 in Montfermeil, France . . . She is the youngest of three children to Pascale and Philippe Le Coz . . . Has an two older brothers, Mael and Quentin . . . Planning to major international business.



## 2012-13 YEAR IN REVIEW

The 2012-13 season for the Georgia State women's golf team provided a lot of learning opportunities for a fairly young team. The Panthers started one freshman, one sophomore and three juniors in the majority of their 10 tournaments.

The fall season started off with a ninth-place finish at the Cardinal Cup as junior Maria Palacios led the way with a tie for 11th. Palacios shot a second-round 69, which proved to be the Panthers' lowest round of the year.

Fall continued at the Golfweek Conference Challenge in Wolcott, Colo., as the Panthers finished 13th in a tough field made up of mostly conference champions. After a 16th-place finish at the Lady Pirate Intercollegiate that saw Palacios earn her second top-25 of the season, head coach Cathy Mant's squad finished the first part of the season with a 15th-place finish at the Palmetto Intercollegiate on Kiawah Island, S.C.

"By looking at our finishes, we did not have the fall that we wanted," Mant said. "However, it was a learning process for our team and not just on the golf course, but adjusting to college life. With so many newcomers we knew that the fall might be tough but we were able to use it as momentum for the spring."



After opening the spring with a 17th-place finish at the UCF Challenge, the Panthers bounced back and started to hit their stride with a seventh-place finish at the JMU Eagle Landing Invitational. Palacios once again led the Panthers with a tie for 16th, opening the event with rounds of 73 and 74.

Georgia State followed by tying for 12th at the Insuperity Lady Jaguar Intercollegiate, just out I-20 in Augusta.

Playing with a home-course advantage, the Panthers concluded the month of March with a tie for third at the John Kirk Panther Intercollegiate. Junior Laura Sanchez finished in fourth, trailed closely by Solveig Helgesen, who tied for eighth. Both personal best finishes as four Panthers finished in the top 15 (Melissa Siviter, t12th; Maria Palacios, t15).

Mant's squad closed out the regular season with a second-place



*While in Augusta for the Insuperity Lady Jaguar Intercollegiate, the Panthers stopped by Augusta National Golf Club, home to The Masters, for a quick photo.*

finish at the UNCW Seahawk Classic as Sanchez finished sixth following a final-round 72 and Palacios tied for seventh, a career-best finish for her.

"Our team really hit its stride in the final two regular-season events," Mant continued. "It gave us a lot of positive momentum heading into our first Sun Belt Conference Championship and into the off-season, especially knowing that all but one player on our team would be back for the 2013-14 season."

In the final event of the season, the Panthers finished seventh at the Sun Belt Championship in Muscle Shoals, Ala., however, with a couple of breaks could have easily finished much better. Sanchez finished tied for 12th, while Siviter tied for 23rd, giving her momentum heading into the offseason as well.

Palacios was named to the All-Sun Belt Second Team after leading the Panthers with four top-20 finishes.



*Maria Palacios*



# GEORGIA STATE WOMEN'S GOLF

*ANNA SCOTT (2004-09)  
NOW PLAYING PROFESSIONALLY IN EUROPE*

# HISTORY

# YEAR-BY-YEAR RECORDS

## 2012-13 Head Coach: Cathy Mant

| Dates    | Tournament                        | Scores           | Finish     |
|----------|-----------------------------------|------------------|------------|
| 9/17-18  | Cardinal Cup                      | 307-292-321--920 | 9th of 15  |
| 9/24-25  | Golfweek Conference Challenge     | 310-314-295--919 | 13th of 18 |
| 10/8-9   | Lady Pirate Intercollegiate       | 321--321         | 16th of 20 |
| 10/28-29 | Edwin Watts/Palmetto Invitational | 315-306-310--931 | 15th of 17 |
| 2/10-12  | UCF Challenge                     | 304-311-308--923 | 17th of 18 |
| 3/8-10   | JMU Eagle Landing Invitational    | 301-299-305--905 | 7th of 17  |
| 3/15-17  | Lady Jaguar Invitational          | 320-314-313--947 | 12th of 18 |
| 3/25-26  | John Kirk Panther Intercollegiate | 322-308-315--945 | t3rd of 14 |
| 4/6-7    | UNCW Seahawk Classic              | 304-314-301--919 | 2nd of 14  |
| 4/15-17  | Sun Belt Championship             | 303-311-299--913 | 7th of 11  |

## 2011-12 Head Coach: Cathy Mant

| Dates    | Tournament                          | Scores           | Finish     |
|----------|-------------------------------------|------------------|------------|
| 9/17-18  | Golfweek Conference Challenge       | 304-319-301--924 | 11th of 17 |
| 10/2-4   | UNCG Starmount Fall Classic         | 307-306-308--921 | 5th of 14  |
| 10/10-11 | Lady Pirate Intercollegiate         | 293-299-290--882 | 2nd of 20  |
| 10/28-30 | Lady Paladin Invitational           | 314-312-318--944 | 3rd of 15  |
| 2/12-14  | UCF Challenge                       | 302-310-312--924 | 17th of 18 |
| 3/5-6    | Hurricane Invitational              | 305-305-316--926 | 3rd of 16  |
| 3/16-18  | SunTrust Gator Women's Invitational | 309-305-315--929 | 17th of 17 |
| 3/26-27  | John Kirk/Panther Intercollegiate   | 311-297-313--921 | 9th of 11  |
| 4/9-10   | Knights & Pirates Invitational      | 300-311-308--919 | 12th of 15 |
| 4/20-22  | CAA Championship                    | 310-310-302--918 | 3rd of 10  |
| 5/11-13  | NCAA East Regional*                 | 74-70-77--221    | t19 of 126 |

\* Charlotte Lorentzen only golfer to compete

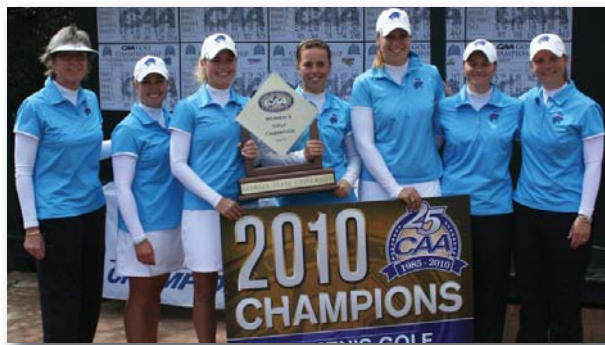
## 2010-11 Head Coach: Cathy Mant

| Dates    | Tournament                           | Scores           | Finish      |
|----------|--------------------------------------|------------------|-------------|
| 9/17-18  | Branch Law Firm/Dick McGuire         | 315-306-297--918 | 13th of 17  |
| 10/2-3   | William K. Warren Irish Invitational | 320-299-307--926 | 6th of 13   |
| 10/8-10  | Mercedes-Benz Collegiate Champ.      | 304-294-306--904 | 13th of 15  |
| 10/29-31 | Lady Paladin Invitational            | 302-320-307--929 | 2nd of 17   |
| 2/13-15  | UCF Challenge                        | 299-315-315--929 | 16th of 17  |
| 2/27-3/1 | Kinderlou Forest Challenge           | 309-307-314--930 | 7th of 14   |
| 3/6-7    | SunTrust Lady Gator Invit.           | 308-294-326--928 | 13th of 17  |
| 3/21-22  | John Kirk/Panther Intercollegiate    | 319-305-301--925 | t11th of 15 |
| 4/1-3    | Liz Murphey Colleigiate Classic      | 317-313-313--943 | 21st of 23  |
| 4/22-24  | CAA Championship                     | 307-310-305--922 | 2nd of 10   |
| 5/5-7    | NCAA East Regional*                  | 78-76-79--233    | t87 of 126  |

\* Charlotte Lorentzen only golfer to compete

## 2009-10 Head Coach: Cathy Mant

| Dates    | Tournament                       | Scores             | Finish     |
|----------|----------------------------------|--------------------|------------|
| 9/6-8    | Hooters Match Play Champ.        | 315-295--610 (2-1) | 10th of 16 |
| 9/13-15  | Golfweek Conference Challenge    | 318-307-291--916   | 11th of 18 |
| 10/4-5   | Eat A Peach Collegiate           | 309-298--607       | 5th of 12  |
| 10/19-20 | Lady Pirate Intercollegiate      | 293-293-293--879   | 1st of 15  |
| 10/26-27 | Palmetto Intercollegiate         | 299-299-311--909   | 9th of 18  |
| 2/14-16  | Hurricane Invitational           | 292-300-303--895   | 2nd of 17  |
| 3/1-2    | UCF Challenge                    | 292-299-304--895   | 2nd of 17  |
| 3/22-23  | John Kirk/Panther Inter.         | 300-301-304--905   | 1st of 13  |
| 3/26-28  | Liz Murphey Collegiate Classic   | 322-305-306--933   | 13th of 23 |
| 4/10-11  | SunTrust Lady Gator Invitational | 309-300-302--911   | 10th of 15 |
| 4/16-18  | CAA Championship                 | 308-315-300--923   | 1st of 10  |
| 5/6-8    | NCAA East Regional               | 290-310-317--917   | 21st of 24 |



The Panthers won the 2010 CAA Championship, one of three wins for the program during the season en route to a NCAA Regional appearance.

## 2008-09 Head Coach: Cathy Mant

| Dates    | Tournament                           | Scores           | Finish    |
|----------|--------------------------------------|------------------|-----------|
| 9/15-16  | U. of Cincinnati Fall Classic        | 291-298-291--880 | 1st of 11 |
| 9/29-30  | U. of Colorado Memorial              | 288-304-291--883 | 7th of 20 |
| 10/12-14 | UNCG Starmount Fall Classic          | 301-301-312--914 | 4th of 15 |
| 10/19-21 | Lady Pirate Intercollegiate          | 299-285-298--882 | 1st of 20 |
| 10/27-28 | Edwin Watts/Palmetto Intercollegiate | 304-306-297--907 | 1st of 19 |
| 2/16-17  | Qdoba Collegiate                     | 291-299-301--891 | 1st of 14 |
| 3/30-31  | John Kirk/Panther Intercollegiate    | 297-291-298--886 | 1st of 13 |
| 4/6-7    | SunTrust Lady Gator Invitational     | 307-305-302--913 | 3rd of 16 |
| 4/17-19  | CAA Championship                     | 304-296-290--890 | 1st of 10 |
| 5/8-9    | NCAA Central Regional                | 303-305-318--926 | 9th of 21 |

## 2007-08 Head Coach: Cathy Mant

| Dates    | Tournament                        | Scores           | Finish     |
|----------|-----------------------------------|------------------|------------|
| 9/17-18  | Napa River Grill Cardinal Cup     | 303-291-302--896 | 4th of 17  |
| 9/24-25  | Myrtle Beach Classic              | 287-292--579     | 2nd of 15  |
| 10/8-9   | McHaney/Morehead Invitational     | 307-306-306--919 | 2nd of 14  |
| 10/13-14 | Lady Jaguar Invitational          | 304-296--600     | 1st of 5   |
| 11/6-7   | Edwin Watts/Palmetto Invitational | 314-303-311--928 | 5th of 20  |
| 2/22-24  | SunTrust Lady Gator Invitational  | 299-301-299--899 | 6th of 15  |
| 3/9-11   | Pinehurst Challenge               | 318-309-300--927 | t4th of 21 |
| 3/31-4/1 | John Kirk/Panther Intercollegiate | 300-313--613     | 1st of 15  |
| 4/7-8    | Canes and Cardinals Classic       | 293-294-297--884 | t2nd of 14 |
| 4/18-20  | CAA Championship                  | 290-298-293--881 | 2nd of 10  |
| 5/8-10   | NCAA East Regional                | 308-306-310--924 | 14th of 21 |

## 2006-07 Head Coach: Cathy Mant

| Dates    | Tournament                            | Scores           | Finish     |
|----------|---------------------------------------|------------------|------------|
| 9/11-12  | Cougar Classic                        | 304-313-319--936 | 17th of 18 |
| 9/18-19  | Napa River Grill Cardinal Cup         | 303-308-308--919 | 6th of 13  |
| 10/16-17 | Ga. St./Pelican Preserve Invitational | 307-306-304--917 | 12th of 15 |
| 10/30-31 | Edwin Watts/Palmetto Intercollegiate  | 317-297-308--922 | 12th of 19 |
| 11/06-07 | Lady Jaguar Invitational              | 303-303--606     | 1st of 7   |
| 2/18-20  | Papa Johns' Collegiate                | 323-317-306--946 | 8th of 12  |
| 3/10-11  | SunTrust Lady Gator Invitational      | 317-307-325--929 | 14th of 16 |
| 3/23-25  | Liz Murphey Collegiate Classic        | 331-312-317--960 | 17th of 18 |
| 4/2-3    | John Kirk/Panther Intercollegiate     | 312-306--618     | 13th of 17 |
| 4/20-22  | CAA Championship                      | 315-310-302--927 | 2nd of 10  |





Georgia State won the 2008 John Kirk Panther Intercollegiate, its first of three straight titles at Eagle's Landing Country Club.

### 2002-03 Head Coach: Cathy Mant

| Dates    | Tournament                        | Scores           | Finish     |
|----------|-----------------------------------|------------------|------------|
| 9/6-8    | U.P./Baytree Classic              | 326-322-313--961 | 16th of 35 |
| 9/23-24  | Louisville Cardinal Cup           | 320-305-319--944 | 6th of 14  |
| 10/11-13 | Beacon Woods Invitational         | 311-309-308--928 | 8th of 13  |
| 10/21-22 | Mission Inn Fall Classic          | 333-315--648     | 5th of 17  |
| 10/28-30 | John Kirk/Panther Intercollegiate | 304-309-304--917 | 3rd of 12  |
| 2/10-11  | Golden Panther Championship       | 334-319--653     | 3rd of 15  |
| 2/28-3/2 | Carolinas Collegiate Classic      | 314-309-315--938 | 4th of 22  |
| 3/17-18  | Waterlefe/USF Invitational        | 326-302-309--937 | 8th of 14  |
| 3/24-25  | UNCW Lady Seahawk Invitational    | 304-301-290--895 | 4th of 14  |
| 4/13-16  | Atlantic Sun Championship         | 298-306-299--903 | 1st of 12  |
| 5/8-10   | NCAA East Regional                | 306-307-306--919 | 18th of 21 |

### 2001-02 Head Coach: Cathy Mant

| Dates    | Tournament                           | Scores           | Finish     |
|----------|--------------------------------------|------------------|------------|
| 9/7-9    | U.P./Baytree Classic                 | 311-324-312--947 | 8th of 31  |
| 9/22-23  | Yale Women's Fall Intercollegiate    | 311-317--628     | 4th of 16  |
| 10/19-21 | Hatter Fall Classic                  | 346-315-315--976 | 9th of 18  |
| 10/29-30 | John Kirk/Panther Invitational       | 318-308--626     | 1st of 9   |
| 11/5-6   | Edwin Watts/Palmetto Intercollegiate | 317-329-319--965 | 13th of 16 |
| 2/11-12  | UCF Invitational                     | 301-306--607     | 3rd of 10  |
| 2/25-26  | Edwin Watts/Carolinas Classic        | 318-323--641     | 10th of 22 |
| 3/4-5    | Green Wave Women's Classic           | 341-339--680     | 13th of 15 |
| 3/18-19  | USF/Waterlefe Invitational           | 314-326-317--957 | 10th of 14 |
| 3/26-27  | UNCW Lady Seahawk                    | 311-310-320--941 | 14th of 18 |
| 4/15-17  | Atlantic Sun Championship            | 315-317-318--950 | 3rd of 11  |

### 2000-01 Head Coach: Cathy Mant

| Dates    | Tournament                           | Scores            | Finish     |
|----------|--------------------------------------|-------------------|------------|
| 9/8-10   | Auburn Tiger Derby Invitational      | 336-329-336--1001 | 12th of 12 |
| 9/22-24  | Lady Rebel Intercollegiate           | 321-318-313--952  | 4th of 13  |
| 10/13-15 | Beacon Woods Invitational            | 312-317-307--936  | 7th of 12  |
| 10/30-31 | John Kirk/Panther Invitational       | 324-319-319--962  | 6th of 8   |
| 11/6-7   | Edwin Watts/Palmetto Intercollegiate | 319-320-309--948  | 7th of 14  |
| 2/12-13  | UCF Invitational                     | 319-323--642      | 7th of 10  |
| 2/26-27  | Edwin Watts/Carolinas Classic        | 316-328--644      | 6th of 20  |
| 3/5-6    | Green Wave Women's Classic           | 319-322-323--964  | 9th of 16  |
| 3/19-20  | USF/Waterlefe Invitational           | 336-323-319--978  | 13th of 16 |
| 4/9-11   | TAAC Championship                    | 320-315-318--943  | 3rd of 10  |

### 2005-06 Head Coach: Cathy Mant

| Dates    | Tournament                            | Scores            | Finish      |
|----------|---------------------------------------|-------------------|-------------|
| 9/19-20  | Napa River Grill Cardinal Cup         | 304-291-299--894  | 1st of 13   |
| 10/3-4   | Ga. St./Pelican Preserve Invitational | 304-310-298--912  | 3rd of 9    |
| 10/21-23 | Taco Bell Intercollegiate             | 285-290-305--880  | 2nd of 21   |
| 10/30-1  | Ross Resorts Invitational             | 300-298-307--905  | 2nd of 12   |
| 2/21-22  | Pat Bradley Championship              | 302-307-299--908  | 3rd of 20   |
| 3/11-12  | SunTrust Lady Gator Invitational      | 314-298-317--929  | 8th of 14   |
| 3/20-21  | USF/Waterlefe Invitational            | 325-330-345--1000 | 8th of 14   |
| 4/3-4    | John Kirk/Panther Intercollegiate     | 315-313--628      | 5th of 14   |
| 4/14-16  | CAA Championship                      | 317-311-301--929  | 1st of 9    |
| 4/22-23  | Lady Buckeye Invitational             | 304-303-300--907  | 10th of 14  |
| 5/11-13  | NCAA West Regional                    | 308-308-303--919  | 11th of 21  |
| 5/23-26  | NCAA Championship*                    | 75-76-76-75--302  | 43rd of 126 |

\*Joanna Klatten only golfer to compete

### 2004-05 Head Coach: Cathy Mant

| Dates    | Tournament                        | Scores           | Finish     |
|----------|-----------------------------------|------------------|------------|
| 9/20-21  | Napa River Grill Cardinal Cup     | 306-306-307--919 | 2nd of 12  |
| 10/1-3   | Beacon Woods Invitational         | 300-294-300--894 | 5th of 12  |
| 10/18-19 | Hatter Fall Classic               | 301-302--603     | 2nd of 13  |
| 10/25-26 | John Kirk/Panther Intercollegiate | 294-309--603     | 2nd of 11  |
| 2/7-8    | UCF Invitational                  | 286-297--583     | 1st of 12  |
| 2/21-22  | Miccosukee Championship           | 317-301-296--914 | 1st of 18  |
| 3/6-8    | Pinehurst Challenge               | 331-309-313--953 | 7th of 18  |
| 3/14-15  | Waterlefe/USF Invitational        | 302-316-300--918 | 5th of 12  |
| 4/4-5    | Lady Seahawk Invitational         | 299-306-309--914 | 1st of 13  |
| 4/11-13  | Atlantic Sun Championship         | 306-303-308--917 | 1st of 11  |
| 5/5-7    | NCAA West Regional                | 317-302-313--932 | 17th of 21 |

### 2003-04 Head Coach: Cathy Mant

| Dates    | Tournament                        | Scores           | Finish     |
|----------|-----------------------------------|------------------|------------|
| 9/5-7    | U.P./Baytree Classic              | 316-310--626     | 8th of 36  |
| 9/20-21  | Louisville Cardinal Cup           | 314-320-330--964 | 5th of 11  |
| 10/10-12 | Beacon Woods Invitational         | 327-314-316--957 | 8th of 9   |
| 10/19-21 | Hatter Fall Classic               | 330-331-330--991 | 10th of 17 |
| 10/26-28 | John Kirk/Panther Intercollegiate | 321-312--633     | 5th of 12  |
| 2/9-10   | UCF Invitational                  | 299-308--607     | 1st of 12  |
| 2/27-29  | Pinehurst Challenge               | Cancelled        | N/A        |
| 3/15-16  | Waterlefe Invitational            | 321-313-343--977 | 15th of 15 |
| 3/22-23  | UNCW Lady Seahawk Invitational    | 324-331-324--979 | 11th of 14 |
| 4/5-6    | Lady Eagle Invitational           | 307-307-315--929 | 4th of 18  |
| 4/19-21  | Atlantic Sun Championship         | 316-294-306--916 | 2nd of 11  |



The Panthers won the 2005 Atlantic Sun Championship in their last year in the league before advancing to the NCAA West Regional.



# YEAR-BY-YEAR RECORDS



The 1998-99 Panthers won two tournaments and finished in the top four of the final five tournaments of the season.

## 1999-2000 Head Coach: Trey Jones

| Dates   | Tournament                           | Scores           | Finish     |
|---------|--------------------------------------|------------------|------------|
| 9/10-12 | U.P./Baytree Classic                 | 303-304-309--916 | 1st of 20  |
| 9/20-21 | Auburn Tiger Derby Classic           | 316-308-302--926 | 8th of 13  |
| 10/1-3  | Lady Rebel Intercollegiate           | 318-316-310--944 | 5th of 19  |
| 11/1-2  | John Kirk/Panther Invitational       | 313-308-328--949 | 2nd of 12  |
| 11/8-9  | Edwin Watts/Palmetto Intercollegiate | 308-317-300--925 | 9th of 19  |
| 2/6-8   | Southern Miss Lady Eagle             | 313-313-309--935 | 2nd of 15  |
| 2/14-15 | UCF Invitational                     | 309-311--620     | N/A        |
| 2/27-28 | Carolinas Classic                    | 325-317--642     | N/A        |
| 3/13-14 | Green Wave Women's Classic           | 314-316-317--947 | 6th of 15  |
| 3/20-21 | USF/Waterlefe Invitational           | 328-327-315--970 | 14th of 15 |
| 4/10-12 | TAAC Championship                    | 316-312-316--944 | 3rd of 10  |

## 1998-99 Head Coach: Trey Jones

| Dates    | Tournament                     | Scores           | Finish     |
|----------|--------------------------------|------------------|------------|
| 9/14-15  | U.P./Cougar Classic            | 318-321--639     | 6th of 20  |
| 9/26-27  | Lady Tar Heel Classic          | 331-323-311--965 | 14th of 17 |
| 10/18-20 | UALR Ladies Golf Classic       | 321-314-319--954 | 6th of 17  |
| 11/1-3   | John Kirk/Panther Invitational | 306-306-308--920 | 2nd of 11  |
| 2/8-9    | Southern Miss Lady Eagle       | 318-318--636     | 6th of 17  |
| 2/22-23  | Carolinas Classic              | 331-308--639     | 1st of 20  |
| 3/4-7    | Ben Hogan/Fripp Island Classic | 317-314-316--956 | 3rd of 15  |
| 3/22-23  | Gamecock Classic               | 316-324--640     | 1st of 14  |
| 3/29-30  | Green Wave Women's Classic     | 320-304--624     | 4th of 12  |
| 4/13-14  | TAAC Championship              | 309-304-315--915 | 3rd of 11  |

## 1997-98 Head Coach: Trey Jones

| Dates    | Tournament                           | Scores            | Finish     |
|----------|--------------------------------------|-------------------|------------|
| 9/26-28  | Stetson Lady Sunshine                | 312-308--620      | 4th of 14  |
| 10/3-4   | Lady Rebel Intercollegiate           | 314-298--612      | 1st of 19  |
| 10/20-21 | Bale Chevrolet/Honda Invitational    | 315-307-306--928  | 2nd of 13  |
| 11/3-4   | John Kirk/Panther Invitational       | 308-313-320--941  | 3rd of 17  |
| 2/16-17  | FAU/Miami Preview                    | 343-344-333--1020 | 11th of 17 |
| 2/28-3/1 | Jaguar/J.C. Penny Invitational       | 332-335--667      | 5th of 15  |
| 3/2-3    | C. of Charleston Spring Invitational | 318-329--647      | 6th of 23  |
| 3/16-17  | Southern Miss Lady Eagle             | 326-323--649      | 4th of 18  |
| 3/23-24  | JSU Gamecock Classic                 | 320-324--644      | 2nd of 15  |
| 4/14-15  | TAAC Championship                    | 322-304-315--941  | 2nd of 11  |

## 1996-97 Head Coach: Trey Jones

| Dates    | Tournament                           | Scores           | Finish    |
|----------|--------------------------------------|------------------|-----------|
| 9/28-29  | Lady Sunshine Invitational           | 309-309--618     | 5th of 15 |
| 10/14-15 | Brooks/Pepsi Classic                 | 330-316-327--973 | 8th of 11 |
| 10/21-22 | UARL Women's Classic                 | 304 304--608     | 1st of 12 |
| 11/4-5   | Lady Panther Classic                 | 321-309--630     | 4th of 17 |
| 11/12-13 | Mercer Fall Invitational             | 320-317--637     | 1st of 9  |
| 2/14-16  | South Alabama Mardi Gras             | 331-319--650     | 3rd of 11 |
| 2/24-25  | Green Wave Women's Classic           | 330-323--653     | 4th of 12 |
| 3/3-4    | C. of Charleston Spring Invitational | 343-330--673     | 5th of 14 |
| 3/24-25  | JSU Gamecock Classic                 | 321-317--638     | 3rd of 8  |
| 4/7-8    | Fighting Camel Classic               | 326-329--655     | 4th of 8  |
| 4/22-23  | TAAC Championship                    | 329-345-324--998 | 5th of 10 |

## 1995-96 Head Coach: Trey Jones

| Dates    | Tournament                           | Scores            | Finish     |
|----------|--------------------------------------|-------------------|------------|
| 9/22-24  | Auburn Lady Tiger Classic            | 319-318--637      | 9th of 12  |
| 10/1-2   | Lady Rebel Intercollegiate           | 336-332--668      | 3rd of 12  |
| 10/15-17 | Brooks Medical/Pepsi Classic         | 337-341-331--1009 | 6th of 10  |
| 10/28-29 | Cougar Invitational                  | 334-319--653      | 9th of 14  |
| 11/5-6   | Lady Panther Invitational            | 331--331          | 7th of 14  |
| 2/12-13  | Lady Trojan Invitational             | 356-339--695      | 7th of 9   |
| 3/4-5    | C. of Charleston Spring Invitational | 338-333--671      | 10th of 19 |
| 3/18-19  | Southern Miss Lady Eagle             | 333-341--674      | 5th of 13  |
| 4/15-16  | Fighting Camel Classic               | 334--334          | 6th of 12  |
| 4/23-25  | TAAC Championship                    | 339-328-325--992  | 4th of 10  |

## 1994-95 Head Coach: Kevin Propst

| Dates    | Tournament                      | Scores            | Finish     |
|----------|---------------------------------|-------------------|------------|
| 9/24-25  | Lady Spartan Invitational       | 345-322--667      | 10th of 21 |
| 10/8-9   | James Madison Invitational      | 331-327--658      | 7th of 11  |
| 10/29-30 | Lady Cougar Invitational        | 313-315--628      | 5th of 20  |
| 11/6-8   | Lady Panther Classic            | 336-322--658      | 4th of 17  |
| 2/10-11  | Mardi Gras Invitational         | 343-340--683      | 9th of 11  |
| 2/19-20  | LDDS Owl Preview Classic        | 340--340          | 11th of 18 |
| 3/5-6    | Edwin Watts/Coll. of Charleston | 341-327--668      | 4th of 18  |
| 3/20-21  | Lady Eagle Invitational         | 334-315--649      | 5th of 18  |
| 4/13-15  | TAAC Championship               | 326-326-314--966  | 5th of 9   |
| 4/21-23  | Lexel Golf/USF Invitational     | 335-326-345--1006 | 11th of 13 |

## 1993-94 Head Coach: Kevin Propst

| Dates    | Tournament                 | Scores            | Finish     |
|----------|----------------------------|-------------------|------------|
| 9/18-19  | Tech-Vandy Classic         | 343-318--661      | 3rd of 12  |
| 9/25-26  | Lady Sunshine Invitational | 325-319--644      | 5th of 13  |
| 10/11-12 | Samford Classic            | 338-345--683      | 14th of 17 |
| 11/15-16 | Lady Panther Classic       | 336-340--676      | 4th of 15  |
| 2/11-13  | South Alabama Mardi Gras   | 346-364-340--1050 | 7th of 11  |
| 3/6-7    | Lady Cougar Invitational   | 347-359--706      | 9th of 15  |
| 3/21-22  | Southern Miss Invitational | 318-327--645      | 1st of 13  |
| 4/9-10   | Lady Topper Invitational   | 353--353          | 6th of 14  |
| 4/17-19  | TAAC Championship          | 354-334-321--1009 | 5th of 8   |

## 1992-93 Head Coach: Kevin Propst

| Dates   | Tournament                          | Scores            | Finish     |
|---------|-------------------------------------|-------------------|------------|
| 10/3-4  | Duke Fall Invitational              | 363-363--726      | 17th of 18 |
| 2/12-14 | Lady Jaguar/Mardi Gras Invitational | 403-385--788      | 8th of 8   |
| 3/27-28 | Lady Topper Invitational            | 342-338--680      | 12th of 16 |
| 4/16-18 | TAAC Championship                   | 350-365-337--1052 | 5th of 7   |



**B**

Rhonda Beaver..... 1992-94  
 Sally Bishop .....2000-04  
 Sarah Bradshaw.....2011-12  
 Cherishton Brett .....2007-11  
 Maria Bunning..... 1992-96  
 Lina Bustos .....2001-05

**C**

Alexa Clark.....2011-12  
 Lauren Court..... 2011-present  
 Ashley Couch .....1998-2003

**D**

Karin Dederling.....2005-07  
 Deanne Dennis ..... 1995-99

**E**

Lacy Englert ..... 1997-98  
 Kathi Eutzler ..... 1996-2000

**F**

Sharon Frechette..... 1993-95

**G**

Natalie Gardner ..... 1994-95  
 Kimmy Graff .....2012-13  
 Charlotte Guilleux.....2010-12

**H**

Jenny Haggblom .....2010  
 Solveig Helgesen .... 2010-present  
 Kelly Henderson ..... 1998-99  
 Marianne Hughes.....2000  
 Camila Hyden..... 1992-96

**J**

Jill Jacobon..... 1993-94

**K**

Trelle Kite ..... 1994-98  
 Joanna Klatten..... 2005-07  
 Annika Korkeila..... 2005-06

**L**

Pam Levine..... 1993-95  
 Julie Lied.....2012-present  
 Nicole Loesch..... 2006-10  
 Charlotte Lorentzen ..... 2009-12



*Lina Bustos, 2001-05*



*Sandra Maier, 2006-10*



*Joanna Klatten, 2005-07*

**M**

Cathrine Madsen ..... 2006-10  
 Sandra Maier ..... 2006-10  
 Linda Mairpuu ..... 1997-2000  
 Jennifer McGuigan ..... 1996-97  
 Allison McMillan..... 1993-94  
 Erin McMillian ..... 1993-94  
 Meredith Mitchell..... 1997-98  
 Lisbeth Meincke..... 2002-06  
 Anna Molin ..... 1998-2002

**P**

Litza Perea .....2000  
 Maria Palacios..... 2012-present

**R**

JeNae Riehlman .....2003-05  
 Ellie Robinson .....2009

**S**

Jennifer Salowitz..... 1993-96  
 Laura Sanchez .....2010-present  
 Anna Scott ..... 2004-09  
 Jennifer Scott..... 1993-95  
 Keri Anne Scott. 2000-02, 2003-05  
 Melissa Siviter .....2012-present  
 Susan Srangue ..... 1993-94  
 Claire Starkie ..... 2005-09

**T**

Pam Torres.....2003-07  
 Vikki Tutt.....1996-2000

**V**

Iliska Verwey .....2007-10

**W**

Laura Walden ..... 1992-95  
 Nicole Wagner.....1999-2003  
 Erica Wein ..... 2004-05  
 Ingrid Welinder ..... 1992-94  
 Elizabeth White .....2000-04  
 Samantha White .....2002-03  
 Beth Willingham ..... 1992-94  
 Jennifer Worsham.....2010-12

**Z**

Haley Zagoria..... 2011-12



*Pam Torres, 2003-07*



*Vikki Tutt, 1996-2000*



*Claire Starkie, 2005-09*



# TOURNAMENT RECORDS



The 2009-10 Panthers won the Lady Pirate Intercollegiate a year after shooting 285, tying for the lowest round in school history.

## LOWEST ROUNDS - OVERALL

| Year | Tournament                      | Rd. | Score |
|------|---------------------------------|-----|-------|
| 285  | Lady Pirate Intercollegiate     | 2nd | 2008  |
| 285  | Taco Bell Intercollegiate       | 1st | 2005  |
| 286  | UCF Invitational                | 1st | 2005  |
| 287  | U.P./Myrtle Beach Classic       | 1st | 2007  |
| 288  | University of Colorado Memorial | 1st | 2008  |
| 290  | NCAA East Regional              | 1st | 2010  |
| 290  | CAA Championship                | 1st | 2008  |
| 290  | Taco Bell Intercollegiate       | 2nd | 2005  |
| 290  | Lady Pirate Intercollegiate     | 3rd | 2011  |
| 290  | CAA Championship                | 3rd | 2009  |
| 290  | UNCW Lady Seahawk               | 3rd | 2003  |

## LOWEST FIRST ROUNDS

| Score | Tournament                               | Year |
|-------|--|------|
| 285   | Taco Bell Intercollegiate                | 2005 |
| 286   | UCF Invitational                         | 2005 |
| 287   | Unlimited Potential/Myrtle Beach Classic | 2007 |
| 288   | University of Colorado Memorial          | 2008 |
| 290   | NCAA East Regional                       | 2010 |
| 290   | CAA Championship                         | 2008 |
| 291   | Qdoba Invitational                       | 2009 |
| 291   | University of Cincinnati Fall Classic    | 2009 |
| 292   | UCF Challenge                            | 2010 |
| 292   | Hurricane Invitational                   | 2010 |
| 293   | Lady Pirate Intercollegiate              | 2011 |
| 293   | Lady Pirate Intercollegiate              | 2009 |
| 293   | Canes and Cardinals Classic              | 2008 |

## LOWEST SECOND ROUNDS

| Score      | Tournament                               | Year        |
|------------|--|-------------|
| 285        | Lady Pirate Intercollegiate              | 2008        |
| 290        | Taco Bell Intercollegiate                | 2005        |
| 291        | John Kirk/Panther Intercollegiate        | 2009        |
| 291        | Napa River Grill Cardinal Cup            | 2007        |
| 291        | Napa River Grill Cardinal Cup            | 2005        |
| <b>292</b> | <b>Cardinal Cup</b>                      | <b>2012</b> |
| 292        | Unlimited Potential/Myrtle Beach Classic | 2007        |
| 293        | Lady Pirate Intercollegiate              | 2009        |
| 294        | Mercedes-Benz Collegiate Classic         | 2009        |
| 294        | Canes and Cardinals Classic              | 2009        |
| 294        | Beacon Woods Invitational                | 2004        |
| 294        | Atlantic Sun Championship                | 2004        |

## LOWEST THIRD ROUNDS

| Score      | Tournament                            | Year        |
|------------|---------------------------------------|-------------|
| 290        | Lady Pirate Intercollegiate           | 2011        |
| 290        | CAA Championship                      | 2009        |
| 290        | UNCW Lady Seahawk                     | 2003        |
| 291        | Golfweek Conference Challenge         | 2009        |
| 291        | University of Colorado Memorial       | 2008        |
| 291        | University of Cincinnati Fall Classic | 2008        |
| 293        | Lady Pirate Intercollegiate           | 2009        |
| 293        | CAA Championship                      | 2008        |
| <b>295</b> | <b>Golfweek Conference Challenge</b>  | <b>2012</b> |
| 296        | Miccosukee Women's Championship       | 2008        |



Georgia State played in the 2008 NCAA East Regional, the first of three straight postseason appearances for the Panthers.



## LOWEST THREE-ROUND TOURNAMENT SCORE

| Score | Tournament                            | Year |
|-------|---------------------------------------|------|
| 879   | Lady Pirate Intercollegiate           | 2009 |
| 880   | University of Cincinnati Fall Classic | 2008 |
| 880   | Taco Bell Intercollegiate             | 2005 |
| 881   | CAA Championship                      | 2008 |
| 882   | Lady Pirate Intercollegiate           | 2011 |
| 882   | Lady Pirate Intercollegiate           | 2008 |
| 883   | University of Colorado Memorial       | 2008 |
| 884   | Canes and Cardinals Classic           | 2008 |
| 886   | John Kirk/Panther Intercollegiate     | 2009 |
| 890   | CAA Championship                      | 2009 |

## LOWEST THREE-ROUND TOURNAMENT SCORE

| Score | Tournament                               | Year |
|-------|--|------|
| 579   | Unlimited Potential/Myrtle Beach Classic | 2007 |
| 583   | UCF Invitational                         | 2005 |
| 600   | Lady Jaguar Invitational                 | 2007 |
| 603   | John Kirk/Panther Intercollegiate        | 2004 |
| 603   | Hatter Fall Classic                      | 2004 |
| 606   | Lady Jaguar Invitational                 | 2006 |
| 607   | Eat A Peach Collegiate                   | 2009 |
| 607   | UCF Invitational                         | 2002 |
| 610   | Hooters Women's Collegiate               | 2009 |



During the 1999-2000 season, Georgia State won the Mercer Fall Invitational by a school-record 39 strokes.

**Panther Golf Note:** Georgia State has won 28 tournaments in its history.



Georgia State won the 2006 CAA Championship by 22 strokes en route to an appearance in the NCAA West Regional, finishing in 11th place.

## MARGIN OF VICTORIES

| Year | Tournament                            | Margin  |
|------|---------------------------------------|---------|
| 1999 | Mercer Fall Invitational              | 39      |
| 2006 | CAA Championship                      | 22      |
| 2003 | Atlantic Sun Championship             | 18      |
| 2008 | Lady Pirate Intercollegiate           | 17      |
| 2008 | University of Cincinnati Fall Classic | 16      |
| 2010 | John Kirk/Panther Intercollegiate     | 14      |
| 2005 | Napa River Grill Cardinal Cup         | 13      |
| 1999 | Unlimited Potential/Baytree Classic   | 11      |
| 2010 | CAA Championship                      | 9       |
| 2009 | John Kirk/Panther Intercollegiate     | 9       |
| 2009 | Qdoba Invitational                    | 9       |
| 2006 | Lady Jaguar Invitational              | 9       |
| 2005 | UCF Invitational                      | 8       |
| 2005 | Miccosukee Women's Championship       | 8       |
| 2001 | John Kirk/Panther Invitational        | 8       |
| 2008 | Edwin Watts/Palmetto Intercollegiate  | 7       |
| 2005 | UNCW Lady Seahawk Invitational        | 7       |
| 2005 | Atlantic Sun Championship             | 6       |
| 2004 | UCF Invitational                      | 3       |
| 1997 | Lady Rebel Intercollegiate            | 3       |
| 2009 | Lady Pirate Intercollegiate           | 2       |
| 1994 | Southern Mississippi Lady Eagle       | 2       |
| 2009 | CAA Championship                      | 1       |
| 2007 | Lady Jaguar Invitational              | 1       |
| 1999 | Carolinas Classic                     | 1       |
| 1999 | JSU Gamecock Classic                  | 1       |
| 1996 | UARL Women's Intercollegiate          | 1       |
| 2008 | John Kirk/Panther Intercollegiate     | Playoff |

# INDIVIDUAL RECORDS

## LOWEST FIRST ROUND SCORES

| Name                | Score | Event                                  |
|---------------------|-------|--|
| Iliska Verwey       | 64    | 2008 Univ. of Cincinnati Fall Classic  |
| Sandra Maier        | 68    | 2008 U. of Colorado Memorial           |
| Iliska Verwey       | 69    | 2007 Myrtle Beach Classic              |
| Annika Korkeila     | 69    | 2005 Taco Bell Intercollegiate         |
| Anna Scott          | 69    | 2004 John Kirk Panther Intercollegiate |
| Charlotte Lorentzen | 70    | 2010 NCAA East Regional                |
| Iliska Verwey       | 70    | 2010 NCAA East Regional                |
| Anna Scott          | 70    | 2009 John Kirk Panther Intercollegiate |
| Cathrine Madsen     | 70    | 2008 CAA Championship                  |
| Lisbeth Meincke     | 70    | 2006 Pat Bradley Championship          |
| Joanna Klatten      | 70    | 2005 Taco Bell Intercollegiate         |
| Lisbeth Meincke     | 70    | 2004 Cardinal Cup                      |
| JeNae Riehlman      | 70    | 2004 UCF Invitational                  |

## LOWEST SECOND ROUND SCORES

| Name                | Score | Event                                  |
|---------------------|-------|--|
| Charlotte Lorentzen | 64    | 2011 SunTrust Gator Invitational       |
| Erica Wein          | 68    | 2004 Atlantic Sun Championship         |
| Charlotte Lorentzen | 69    | 2011 UNCG Starmount Fall Classic       |
| Charlotte Lorentzen | 69    | 2011 Lady Pirate Intercollegiate       |
| Charlotte Lorentzen | 69    | 2010 William K. Warren Irish Invite    |
| Charlotte Lorentzen | 69    | 2012 CAA Championship                  |
| Cathrine Madsen     | 69    | 2008 CAA Championship                  |
| Maria Palacios      | 69    | 2012 Cardinal Cup                      |
| Cathrine Madsen     | 70    | 2010 Hurricane Invitational            |
| Cathrine Madsen     | 70    | 2010 John Kirk Panther Intercollegiate |
| Sandra Maier        | 70    | 2009 John Kirk Panther Intercollegiate |
| Sandra Maier        | 70    | 2008 Lady Pirate Intercollegiate       |
| Iliska Verwey       | 70    | 2007 Lady Jaguar Invitational          |
| Anna Scott          | 70    | 2005 Cardinal Cup                      |
| Anna Scott          | 70    | 2005 Taco Bell Intercollegiate         |
| Anna Scott          | 70    | 2005 UCF Invitational                  |
| Lisbeth Meincke     | 70    | 2004 Beacon Woods Invitational         |
| Lisbeth Meincke     | 70    | 2004 Hatter Fall Classic               |
| Anna Molin          | 70    | 1999 Tulane Green Wave Classic         |
| Charlotte Lorentzen | 70    | 2012 NCAA East Regional                |

## LOWEST THIRD ROUND SCORES

| Name                | Score | Event                                 |
|---------------------|-------|---------------------------------------|
| Claire Starkie      | 68    | 2008 Univ. of Cincinnati Fall Classic |
| Lisbeth Meincke     | 68    | 2004 Beacon Woods Invitational        |
| Sam White           | 68    | 2003 Lady Seahawk Invitational        |
| Solveig Helgesen    | 69    | 2011 Lady Pirate Intercollegiate      |
| Claire Starkie      | 69    | 2006 Edwin Watts/Palmetto Inter.      |
| Charlotte Lorentzen | 69    | 2010 CAA Championship                 |
| Charlotte Lorentzen | 70    | 2010 SunTrust Gator Invitational      |
| Cathrine Madsen     | 70    | 2009 Golfweek Conference Challenge    |
| Iliska Verwey       | 70    | 2008 Univ. of Cincinnati Fall Classic |
| Lisbeth Meincke     | 70    | 2006 CAA Championship                 |
| Lisbeth Meincke     | 70    | 2005 Cardinal Cup                     |
| Lisbeth Meincke     | 70    | 2005 Waterlefe/USF Invitational       |
| Lisbeth Meincke     | 70    | 2004 Atlantic Sun Championship        |
| Sally Bishop        | 70    | 2000 Edwin Watts/Palmetto Inter.      |

## ROUNDS PLAYED IN A SEASON

| Name                | Rounds | Season  |
|---------------------|--------|---------|
| Cathrine Madsen     | 34     | 2009-10 |
| Sandra Maier        | 34     | 2009-10 |
| Charlotte Lorentzen | 33     | 2011-12 |
| Charlotte Lorentzen | 33     | 2009-10 |
| Joanna Klatten      | 33     | 2005-06 |
| Lisbeth Meincke     | 32     | 2005-06 |

## EVENTS PLAYED IN A SEASON

| Name                | Events | Season    |
|---------------------|--------|-----------|
| Charlotte Lorentzen | 12     | 2009-10   |
| Cathrine Madsen     | 12     | 2009-10   |
| Sandra Maier        | 12     | 2009-10   |
| Ellie Robinson      | 12     | 2009-10   |
| Charlotte Lorentzen | 11     | 2011-12   |
| Iliska Verwey       | 11     | 2009-10   |
| Cathrine Madsen     | 11     | 2007-08   |
| Anna Scott          | 11     | 2007-08   |
| Iliska Verwey       | 11     | 2007-08   |
| Lisbeth Meincke     | 11     | 2005-06   |
| Joanna Klatten      | 11     | 2005-06   |
| Lisbeth Meincke     | 11     | 2005-06   |
| JeNae Riehlman      | 11     | 2004-05   |
| Anna Scott          | 11     | 2004-05   |
| Erica Wein          | 11     | 2004-05   |
| Sally Bishop        | 11     | 2002-03   |
| Sam White           | 11     | 2002-03   |
| Sally Bishop        | 11     | 2001-02   |
| Anna Molin          | 11     | 2001-02   |
| Kathi Eutzler       | 11     | 1999-2000 |
| Anna Molin          | 11     | 1999-2000 |
| Vikki Tutt          | 11     | 1999-2000 |



## LOWEST THREE-ROUND TOURNAMENT SCORES

| Name                | Score | Event                                  |
|---------------------|-------|--|
| Iliska Verwey       | 210   | 2008 Cincinnati Fall Classic           |
| Cathrine Madsen     | 211   | 2008 CAA Championship                  |
| Lisbeth Meincke     | 211   | 2004 Beacon Woods Invitational         |
| Lisbeth Meincke     | 214   | 2005 Waterlefe/USF Invitational        |
| Lisbeth Meincke     | 214   | 2004 Cardinal Cup                      |
| Lisbeth Meincke     | 215   | 2006 Pat Bradley Championship          |
| Lisbeth Meincke     | 215   | 2005 Cardinal Cup                      |
| Charlotte Lorentzen | 216   | 2011 SunTrust Gator Invitational       |
| Sandra Maier        | 216   | 2009 John Kirk Panther Intercollegiate |
| Iliska Verwey       | 216   | 2008 Lady Pirate Intercollegiate       |
| Sandra Maier        | 216   | 2008 Univ. of Colorado Memorial        |
| Lisbeth Meincke     | 216   | 2004 Atlantic Sun Championship         |



Iliska Verwey earned 2008 CAA Golfer of the Year honors. She holds several GSU records, including lowest three-round tournament score in school history.

## SINGLE-SEASON SCORING AVERAGE

| Name                | Average | Year    |
|---------------------|---------|---------|
| Lisbeth Meincke     | 73.63   | 2004-05 |
| Charlotte Lorentzen | 73.82   | 2011-12 |
| Iliska Verwey       | 74.53   | 2007-08 |
| Lisbeth Meincke     | 74.56   | 2005-06 |
| Anna Scott          | 74.83   | 2007-08 |
| Charlotte Lorentzen | 74.84   | 2009-10 |
| Charlotte Lorentzen | 74.90   | 2010-11 |
| Anna Scott          | 75.04   | 2008-09 |
| Iliska Verwey       | 75.14   | 2008-09 |
| Cathrine Madsen     | 75.53   | 2008-09 |
| Sandra Maier        | 75.53   | 2008-09 |



Lisbeth Meincke's name is everywhere in the GSU history book and it is no surprise, as she won four straight conference championships.

## TOP-5 PERFORMANCES IN A SEASON

| Name                | Top 5s | Season    |
|---------------------|--------|-----------|
| Lisbeth Meincke     | 9      | 2004-05   |
| Anna Scott          | 5      | 2008-09   |
| Lisbeth Meincke     | 5      | 2003-04   |
| Vikki Tutt          | 5      | 1998-99   |
| Iliska Verwey       | 4      | 2008-09   |
| Lisbeth Meincke     | 4      | 2005-06   |
| Vikki Tutt          | 4      | 1999-2000 |
| Charlotte Lorentzen | 4      | 2011-12   |
| Charlotte Lorentzen | 3      | 2010-11   |
| Cathrine Madsen     | 3      | 2008-09   |
| Cathrine Madsen     | 3      | 2009-10   |
| Sandra Maier        | 3      | 2008-09   |
| Anna Scott          | 3      | 2004-05   |
| Anna Scott          | 3      | 2005-06   |
| Anna Scott          | 3      | 2007-08   |
| Joanna Klatten      | 3      | 2005-06   |
| Nicole Wagner       | 3      | 2002-03   |
| Sam White           | 3      | 2002-03   |
| Vikki Tutt          | 3      | 1996-97   |

## TOP-10 PERFORMANCES IN A SEASON

| Name                | Top 10s | Season    |
|---------------------|---------|-----------|
| Lisbeth Meincke     | 10      | 2004-05   |
| Lisbeth Meincke     | 8       | 2005-06   |
| Erica Wein          | 7       | 2004-05   |
| Charlotte Lorentzen | 6       | 2011-12   |
| Cathrine Madsen     | 6       | 2009-10   |
| Anna Scott          | 6       | 2007-08   |
| Iliska Verwey       | 6       | 2007-08   |
| Lisbeth Meincke     | 6       | 2003-04   |
| Vikki Tutt          | 6       | 1999-2000 |
| Vikki Tutt          | 6       | 1998-99   |
| Vikki Tutt          | 6       | 1996-97   |

# INDIVIDUAL RECORDS

## INDIVIDUAL VICTORIES

| Name                | Year | Event                             |
|---------------------|------|-----------------------------------|
| Charlotte Lorentzen | 2012 | CAA Championship                  |
| Charlotte Lorentzen | 2012 | Hurricane Invitational            |
| Charlotte Lorentzen | 2011 | Lady Paladin Invitational         |
| Charlotte Lorentzen | 2011 | UNCG Starmount Fall Classic       |
| Charlotte Guilleux  | 2011 | CAA Championship                  |
| Charlotte Lorentzen | 2010 | CAA Championship                  |
| Cathrine Madsen     | 2010 | John Kirk/Panther Intercollegiate |
| Sandra Maier        | 2009 | John Kirk/Panther Intercollegiate |
| Iliska Verwey       | 2008 | Lady Pirate Intercollegiate       |
| Iliska Verwey       | 2008 | Univ. of Cincinnati Fall Classic  |
| Cathrine Madsen     | 2008 | CAA Championship                  |
| Iliska Verwey       | 2007 | Lady Jaguar Invitational          |
| Lisbeth Meincke     | 2006 | CAA Championship                  |
| Lisbeth Meincke     | 2005 | Cardinal Cup                      |
| Lisbeth Meincke     | 2005 | Atlantic Sun Championship         |
| Lisbeth Meincke     | 2004 | Napa River Grill Cardinal Cup     |
| Lisbeth Meincke     | 2004 | Hatter Fall Classic               |
| Lisbeth Meincke     | 2004 | Atlantic Sun Championship         |
| Lisbeth Meincke     | 2003 | Atlantic Sun Championship         |
| Anna Molin          | 2001 | John Kirk/Panther Intercollegiate |
| Vikki Tutt          | 1999 | U.P./Baytree Classic              |
| Trelle Kite         | 1997 | Lady Rebel Intercollegiate        |
| Trelle Kite         | 1996 | UARL Women's Intercollegiate      |



*Charlotte Lorentzen won the 2011 Lady Paladin Invitational, one of five career tournament titles.*



*Charlotte Guilleux won the 2011 CAA Championship, one of three straight individual conference championships for GSU.*



*Lisbeth Meincke won a school-record seven tournaments in her four-year career, including three Atlantic Sun Conference Championships.*



## FIRST-TEAM ALL-CONFERENCE (23)

|                     |               |
|---------------------|---------------|
| Lisbeth Meincke     | 2003-06       |
| Anna Scott          | 2006, 2008-09 |
| Charlotte Lorentzen | 2010-12       |
| Cathrine Madsen     | 2009-10       |
| Iliska Verwey       | 2008- 09      |
| Nicole Wagner       | 2002-03       |
| Charlotte Guilleux  | 2011          |
| Joanna Klatten      | 2007          |
| Erica Wein          | 2005          |
| Anna Molin          | 2002          |
| Vikki Tutt          | 2000          |
| Marla Bunning       | 1995          |
| Camilla Hyden       | 1994          |

## SECOND-TEAM ALL-CONFERENCE

|                    |            |
|--------------------|------------|
| Charlotte Guilleux | 2012       |
| Sandra Maier       | 2009-10    |
| Cathrine Madsen    | 2007-08    |
| Anna Molin         | 2000-01    |
| Vikki Tutt         | 1997, 1999 |
| Claire Starkie     | 2007       |
| Anna Scott         | 2005       |
| Deanne Dennis      | 1999       |

## ALL-TOURNAMENT (16)

|                     |            |
|---------------------|------------|
| Lisbeth Meincke     | 2003-06    |
| Joanna Klatten      | 2006-07    |
| Sandra Maier        | 2008-09    |
| Anna Scott          | 2005, 2009 |
| Charlotte Guilleux  | 2011       |
| Charlotte Lorentzen | 2010       |
| Nicole Loesch       | 2007       |
| Erica Wein          | 2004       |
| Marla Bunning       | 1995       |
| Camilla Hyden       | 1994       |

## CONFERENCE M.O.P.

|                     |      |
|---------------------|------|
| Charlotte Guilleux  | 2011 |
| Charlotte Lorentzen | 2010 |
| Cathrine Madsen     | 2008 |



Head coach Cathy Mant has earned conference coach of the year honors six times since 2003.

## CONFERENCE COACH OF THE YEAR

|            |      |
|------------|------|
| Cathy Mant | 2010 |
| Cathy Mant | 2009 |
| Cathy Mant | 2008 |
| Cathy Mant | 2006 |
| Cathy Mant | 2005 |
| Cathy Mant | 2003 |

## ALL-ROOKIE TEAM

|                 |      |
|-----------------|------|
| Lauren Court    | 2012 |
| Anna Scott      | 2005 |
| Joanna Klatten  | 2005 |
| Lisbeth Meincke | 2003 |
| Sally Bishop    | 2003 |

## CONFERENCE CHAMPIONSHIPS

|      |                           |
|------|---------------------------|
| 2012 | CAA (Individual)          |
| 2011 | CAA (Individual)          |
| 2010 | CAA                       |
| 2010 | CAA (Individual)          |
| 2009 | CAA                       |
| 2008 | CAA (Individual)          |
| 2006 | CAA                       |
| 2006 | CAA (Individual)          |
| 2005 | Atlantic Sun              |
| 2005 | Atlantic Sun (Individual) |
| 2004 | Atlantic Sun (Individual) |

|      |                           |
|------|---------------------------|
| 2003 | Atlantic Sun              |
| 2003 | Atlantic Sun (Individual) |

## CONFERENCE FINISHES

|      |                       |
|------|-----------------------|
| 2013 | Seventh (Sun Belt)    |
| 2012 | Third (CAA)           |
| 2011 | Second (CAA)          |
| 2010 | First (CAA)           |
| 2009 | First (CAA)           |
| 2008 | Second (CAA)          |
| 2007 | Second (CAA)          |
| 2006 | First (CAA)           |
| 2005 | First (Atlantic Sun)  |
| 2004 | Second (Atlantic Sun) |
| 2003 | First (Atlantic Sun)  |
| 2002 | Third (Atlantic Sun)  |
| 2001 | Third (TAAC)          |
| 2000 | Third (TAAC)          |
| 1999 | Third (TAAC)          |
| 1998 | Second (TAAC)         |
| 1997 | Fifth (TAAC)          |
| 1996 | Fourth (TAAC)         |
| 1995 | Fifth (TAAC)          |
| 1994 | Fifth (TAAC)          |
| 1993 | Fifth (TAAC)          |

## NCAA INDIVIDUAL QUALIFIERS

|      |                |
|------|----------------|
| 2006 | Joanna Klatten |
|------|----------------|

## CONFERENCE GOLFER OF THE YEAR

|                     |      |
|---------------------|------|
| Charlotte Lorentzen | 2012 |
| Charlotte Lorentzen | 2011 |
| Charlotte Lorentzen | 2010 |
| Iliska Verwey       | 2008 |
| Lisbeth Meincke     | 2006 |
| Lisbeth Meincke     | 2005 |
| Vikki Tutt          | 2000 |

### Conference Affiliation:

2013 to present - Sun Belt Conference  
 2006 to 2012 - Colonial Athletic Association  
 2001 to 2005 - Atlantic Sun Conference\*  
 1983 to 2001 - Trans America Athletic Conference

\*The TAAC was renamed the Atlantic Sun Conference on July 1, 2001.



# ALL-ACADEMIC HONORS



The women's golf team won the award for the top team GPA at the 2013 GSU Awards Banquet.

## SUN BELT ALL-ACADEMIC

|                  |         |
|------------------|---------|
| Lauren Court     | 2012-13 |
| Melissa Siviter  | 2012-13 |
| Solveig Helgesen | 2012-13 |
| Maria Palacios   | 2012-13 |
| Kimmy Graff      | 2012-13 |
| Julie Lied       | 2012-13 |
| Laura Sanchez    | 2012-13 |

## CAA ALL-ACADEMIC

|                     |         |
|---------------------|---------|
| Melissa Siviter     | 2011-12 |
| Charlotte Guilleux  | 2011-12 |
| Solveig Helgesen    | 2011-12 |
| Charlotte Lorentzen | 2011-12 |
| Laura Sanchez       | 2011-12 |
| Cheriston Brett     | 2010-11 |
| Charlotte Lorenzten | 2010-11 |
| Solveig Helgesen    | 2010-11 |
| Laura Sanchez       | 2010-11 |
| Charlotte Guilleux  | 2010-11 |
| Jennifer Worsham    | 2010-11 |
| Nicole Loesch       | 2009-10 |
| Charlotte Lorentzen | 2009-10 |
| Cathrine Madsen     | 2009-10 |
| Sandra Maier        | 2009-10 |
| Cherishton Brett    | 2008-09 |
| Charlotte Lorentzen | 2008-09 |
| Cathrine Madsen     | 2008-09 |
| Sandra Maier        | 2008-09 |
| Anna Scott          | 2008-09 |
| Claire Starkie      | 2008-09 |
| Iliska Verwey       | 2008-09 |

## A-SUN ALL-ACADEMIC

|                 |         |
|-----------------|---------|
| Lina Bustos     | 2004-05 |
| Joanna Klatten  | 2004-05 |
| Lisbeth Meincke | 2004-05 |
| Keri Anne Scott | 2004-05 |
| Pamela Torres   | 2004-05 |
| Erica Wein      | 2004-05 |
| Sally Bishop    | 2003-04 |
| Lina Bustos     | 2003-04 |
| Lisbeth Meincke | 2003-04 |
| Keri Anne Scott | 2003-04 |
| Erica Wein      | 2003-04 |
| Elizabeth White | 2003-04 |
| Sally Bishop    | 2002-03 |
| Nicole Wagner   | 2002-03 |
| Elizabeth White | 2002-03 |
| Sally Bishop    | 2001-02 |
| Lina Bustos     | 2001-02 |
| Ashley Couch    | 2001-02 |
| Anna Molin      | 2001-02 |
| Nicole Wagner   | 2001-02 |
| Elizabeth White | 2001-02 |

## TAAC ALL-ACADEMIC

|                  |           |
|------------------|-----------|
| Sally Bishop     | 2000-01   |
| Nicole Wagner    | 2000-01   |
| Kathleen Eutzler | 1999-2000 |
| Anna Molin       | 1999-2000 |
| Vikki Tutt       | 1999-2000 |
| Nicole Wagner    | 1999-2000 |
| Deanne Dennis    | 1998-99   |
| Kathleen Eutzler | 1998-99   |



Nicole Wagner was a four-time all-academic honoree as a member of the TAAC and A-Sun.



Sally Bishop earned four all-academic honors before working in the GSU Athletic Department for several years.

|                   |         |
|-------------------|---------|
| Anna Molin        | 1998-99 |
| Vikki Tutt        | 1998-99 |
| Jennifer McGuigan | 1997-88 |
| Vikki Tutt        | 1997-98 |
| Deanne Dennis     | 1996-97 |
| Trelle Kite       | 1996-97 |
| Jennifer McGuigan | 1996-97 |
| Vikki Tutt        | 1996-97 |
| Marla Bunning     | 1995-96 |
| Deanne Dennis     | 1995-96 |
| Camilla Hyden     | 1995-96 |
| Marla Bunning     | 1994-95 |
| Camilla Hyden     | 1994-95 |
| Carrie Kirk       | 1994-95 |
| Jennifer Scott    | 1994-95 |
| Marla Bunning     | 1993-94 |
| Camilla Hyden     | 1993-94 |
| Erin McMillan     | 1993-94 |





**2014 NCAA Regional Sites (May 8-10)**

- SouthWood Golf Club (Tallahassee, Fla.)
- Karsten Creek Golf Club (Stillwater, Okla.)
- Tumble Creek at Suncadia Resort (Cle Elum, Wash.)

**2014 NCAA Championship (May 20-23)**

- Tulsa Country Club (Tulsa, Okla.)

Georgia State has advanced to the NCAA Regional six times as a team in program history. The Panthers have also sent an individual to the NCAA Regional twice in program history.

Joanna Klatten (photo above) owns the best finish as an individual, tying for fifth at the 2006 NCAA West Regional and advancing to the NCAA Championship, the first Panther to qualify and play for a national championship in women's golf.

The Panthers made their first appearance in 2003, then made back-to-back appearances in 2005 and 2006, before three straight appearances as a team from 2008-10.

Georgia State's best finish as a team came in 2009, finishing in ninth and missing out on a spot in the National Championship by just one spot and four strokes.

In both 2011 and 2012, Charlotte Lorentzen qualified as an individual for the NCAA Regional, meaning GSU has been represented in the postseason in eight times in the last 11 years.

*The 2009-10 Panthers capped off a run of three straight NCAA Regional appearances for GSU.*



**2010 NCAA East Regional**

Ironwood C.C. (Greenville, N.C.)

| <b>Finish</b>                 | <b>Scores</b>           |
|-------------------------------|-------------------------|
| 1. South Carolina .....       | 283-291-290--864        |
| 2. Tennessee .....            | 283-287-296--866        |
| 3. Auburn .....               | 280-295-293--868        |
| Duke.....                     | 290-278-300--868        |
| 5. Vanderbilt.....            | 292-287-292--871        |
| 6. Tulane .....               | 285-295-293--873        |
| 7. Pepperdine.....            | 281-290-306--877        |
| 8. TCU .....                  | 287-296-297--880        |
| <b>Missed Cut:</b>            |                         |
| 9. Texas Tech.....            | 285-298-304--887        |
| Wake Forest.....              | 296-295-296--887        |
| 11. Florida .....             | 284-297-309--890        |
| 12. East Carolina .....       | 293-305-297--895        |
| 13. North Carolina.....       | 294-292-313--899        |
| 14. Campbell.....             | 297-307-298--902        |
| 15. East Tennessee State..... | 285-304-314--903        |
| 16. Furman.....               | 305-296-303--904        |
| 17. Washington.....           | 305-295-307--907        |
| 18. Chattanooga.....          | 293-301-316--910        |
| 19. Stetson.....              | 298-306-307--911        |
| Coastal Carolina.....         | 307-296-308--911        |
| <b>21. Georgia State.....</b> | <b>290-310-317--917</b> |
| 22. Coll. of Charleston.....  | 297-310-314--921        |
| 23. Charleston Southern.....  | 315-318-315--948        |
| 24. Farleigh Dickinson.....   | 327-331-332--990        |

**Georgia State Results:**

|                                |               |
|--------------------------------|---------------|
| T9. Iliska Verwey.....         | 70-71-75--216 |
| T13. Charlotte Lorentzen ..... | 70-74-73--217 |
| T101. Cathrine Madsen.....     | 73-80-82--235 |
| T116. Sandra Maier.....        | 81-85-87--253 |
| W Ellie Robinson.....          | 77-W-W--W     |



## 2009 NCAA Central Regional Scarlet Course (Columbus, Ohio)

| Finish                 | Scores           |
|------------------------|------------------|
| 1. UCLA                | 284-290-303--877 |
| 2. Purdue              | 295-289-312--896 |
| 3. Wake Forest         | 298-295-306--899 |
| 4. Oklahoma State      | 297-292-312--901 |
| 5. Michigan State      | 295-300-310--905 |
| 6. New Mexico          | 301-296-315--912 |
| 7. Ohio State          | 306-293-318--917 |
| 8. Chattanooga         | 303-299-320--922 |
| <b>Missed Cut:</b>     |                  |
| 9. Georgia State       | 303-305-318--926 |
| 10. Washington         | 308-300-319--927 |
| 11. Louisville         | 308-307-317--932 |
| 12. Kent State         | 305-304-325--934 |
| 13. Kentucky           | 308-301-326--935 |
| 14. Stanford           | 310-304-332--946 |
| 15. NC State           | 312-307-335--954 |
| 16. Notre Dame         | 316-305-338--959 |
| 17. Michigan           | 312-321-327--960 |
| 18. Illinois State     | 311-313-339--963 |
| 19. Harvard            | 318-323-338--979 |
| 20. Murray State       | 322-327-341--990 |
| 21. Farleigh Dickinson | 328-321-346--995 |

### Georgia State Results:

|                          |               |
|--------------------------|---------------|
| T20. Charlotte Lorentzen | 77-75-77--229 |
| T44. Sandra Maier        | 78-75-80--233 |
| T46. Anna Scott          | 76-79-79--234 |
| T55. Iliksa Verwey       | 75-76-85--236 |
| T66. Catherine Madsen    | 75-82-82--239 |

## 2008 NCAA East Regional UGA Golf Club (Athens, Ga.)

| Finish                  | Scores           |
|-------------------------|------------------|
| 1. Florida              | 290-295-298--883 |
| 2. Duke                 | 285-303-296--884 |
| 3. Georgia              | 299-300-290--889 |
| 4. Auburn               | 296-302-296--894 |
| 5. Virginia             | 296-310-292--898 |
| T6. South Carolina      | 291-303-305--899 |
| T6. Wake Forest         | 298-305-296--899 |
| 8. Furman               | 292-307-301--900 |
| <b>Missed Cut:</b>      |                  |
| 9. New Mexico           | 304-301-296--901 |
| 10. Louisville          | 293-315-304--912 |
| 11. Vanderbilt          | 308-305-301--914 |
| 12. East Carolina       | 314-297-308--919 |
| 13. UNC Wilmington      | 312-302-308--922 |
| 14. Georgia State       | 308-306-310--924 |
| 15. Missouri            | 305-320-300--925 |
| 16. Tennessee           | 311-311-307--929 |
| 17. UCF                 | 312-311-307--930 |
| 18. Indiana             | 309-313-311--933 |
| 19. Charleston Southern | 309-315-326--950 |
| 20. Jacksonville State  | 327-315-313--955 |
| 21. Jackson State       | 338-333-325--996 |

### Georgia State Results:

|                      |               |
|----------------------|---------------|
| T17. Anna Scott      | 75-75-73--223 |
| T27. Iliksa Verwey   | 74-75-77--226 |
| T85. Cathrine Madsen | 81-79-80--240 |
| T85. Claire Starkie  | 83-77-80--240 |
| 90. Sandra Maier     | 78-81-82--241 |

## 2005 NCAA West Regional

University Golf Club (Las Cruces, N.M.)

| Finish                 | Scores           |
|------------------------|------------------|
| T1. UCLA               | 304-299-286--889 |
| T1. Tennessee          | 291-310-288--889 |
| 3. California          | 296-307-288--891 |
| 4. Southern California | 293-302-297--892 |
| 5. Oklahoma State      | 304-301-293--898 |
| T6. UC Irvine          | 308-300-298--906 |
| T6. Brigham Young      | 298-305-303--906 |
| 8. Stanford            | 306-301-301--908 |
| <b>Missed Cut:</b>     |                  |
| 9. Georgia             | 296-306-309--911 |
| 10. Oregon             | 301-304-308--913 |
| T11. UNLV              | 301-312-304--917 |
| T11. Washington State  | 302-305-310--917 |
| 13. Arizona            | 303-314-305--922 |
| 14. Northwestern       | 311-306-306--923 |
| 15. Colorado State     | 308-305-312--925 |
| 16. San Francisco      | 318-306-302--926 |
| 17. Georgia State      | 312-302-313--932 |
| 18. Illinois State     | 312-309-317--938 |
| 19. Oral Roberts       | 318-311-313--942 |
| 20. Denver             | 312-314-313--944 |
| 21. Portland State     | 320-326-306--952 |

### Georgia State Results:

|                      |               |
|----------------------|---------------|
| T48. Anna Scott      | 78-76-77--231 |
| T58. Lisbeth Meincke | 74-76-82--232 |
| T66. Joanna Klatten  | 82-75-77--234 |
| T75. Erica Wein      | 83-75-77--235 |
| T103. JeNae Riehlman | 83-80-84--247 |

## 2006 NCAA West Regional

Washington National G.C. (Auburn, Wash.)

| Finish                | Scores           |
|-----------------------|------------------|
| 1. Purdue             | 289-294-298--881 |
| 2. UCLA               | 288-303-296--887 |
| 3. Washington         | 288-303-297--888 |
| 4. Stanford           | 303-295-298--896 |
| 5. Georgia            | 296-302-302--900 |
| 6. UNLV               | 304-301-299--904 |
| 7. Arizona            | 303-300-307--910 |
| 8. Arkansas           | 299-307-305--911 |
| <b>Missed Cut:</b>    |                  |
| 9. UC Irvine          | 301-312-300--913 |
| 10. BYU               | 307-302-308--917 |
| 11. Georgia State     | 308-308-303--919 |
| 12. San Jose State    | 305-309-306--920 |
| 13. Oregon State      | 306-313-306--925 |
| 14. New Mexico        | 307-318-301--926 |
| 15. New Mexico State  | 303-320-318--941 |
| 16. Denver            | 323-312-307--942 |
| 17. Long Beach State  | 307-325-318--950 |
| T18. Washington State | 320-318-313--951 |
| T18. Oral Roberts     | 317-311-323--951 |
| 20. Montana           | 330-319-310--959 |
| 21. Bradley           | 326-319-322--967 |

### Georgia State Results:

|                      |               |
|----------------------|---------------|
| T5. Joanna Klatten   | 74-73-73--220 |
| T29. Lisbeth Meincke | 77-75-75--227 |
| T66. Annika Korkeila | 79-78-79--236 |
| T66. Anna Scott      | 78-82-76--236 |
| T90. Karin Dederling | 79-85-80--244 |

## 2003 NCAA East Regional

Salem Glen C.C. (Winston-Salem, N.C.)

| Finish                | Scores           |
|-----------------------|------------------|
| 1. Duke               | 288-286-283--857 |
| T2. Georgia           | 294-290-281--865 |
| T2. Vanderbilt        | 295-288-282--865 |
| 4. Auburn             | 298-291-278--867 |
| 5. Arizona            | 303-288-283--874 |
| 6. North Carolina     | 301-287-294--882 |
| 7. South Carolina     | 303-287-294--884 |
| 8. Florida State      | 290-302-297--889 |
| <b>Missed Cut:</b>    |                  |
| 9. Furman             | 307-293-293--893 |
| 10. Wake Forest       | 307-293-294--894 |
| 11. Tulane            | 309-293-293--895 |
| 12. Mississippi State | 306-302-297--905 |
| 13. Penn State        | 305-306-296--907 |
| T14. East Carolina    | 300-310-298--908 |
| T14. NC State         | 303-306-299--908 |
| 16. Western Carolina  | 306-307-300--913 |
| 17. UNC Wilmington    | 307-306-305--918 |
| 18. Georgia State     | 306-307-306--919 |
| 19. Mississippi       | 322-302-296--920 |
| 20. South Florida     | 312-304-306--922 |
| 21. St. Francis (Pa.) | 335-320-326--981 |

### Georgia State Results:

|                      |               |
|----------------------|---------------|
| T36. Sam White       | 76-74-74--224 |
| T64. Lisbeth Meincke | 72-76-81--229 |
| T73. Nicole Wagner   | 82-76-73--231 |
| T85. Sally Bishop    | 76-81-78--235 |
| 105. Elizabeth White | 88-85-81--254 |



Charlotte Lorentzen competed as an individual in back-to-back NCAA Regionals in 2010 and 2011.



Over the past 20 seasons, the John Kirk Panther Intercollegiate has become the annual highlight on the Georgia State women's golf schedule.

The John Kirk Panther Intercollegiate was first played in 1993 at Northwood Country Club, the home of the Panthers until 1999. The tournament was founded by then-Georgia State golf coach Kevin Propst and assistant Kirk McQueen with extensive help and support from Northwood County Club club pro John Kirk. When John Kirk passed away after a battle with cancer, his name was added to the Panther Intercollegiate to honor his assistance and commitment to the Georgia State women's golf program.

After one year at Chateau Elan Golf Club in 2000, the John Kirk Panther Intercollegiate moved to Eagle's Landing Country Club in Stockbridge, Ga. and has remained there ever since.

The first time the event was held at Eagle's Landing, in 2001, the Panthers won the team title and Georgia State golfer Anna Molin took home medalist honors. Both occasions marked firsts at Georgia State's home tournament.

Entering the 2014 edition of the event, the Panthers will look to return to their winning ways after winning three straight editions from 2008-10. After a tie for third-place finish last season, Georgia State will look to make a statement at its home course this year. The tournament will run March 30-April 1. The 54-hole tournament will be played as a par-72, with the course measuring 6,100 yards.

### 2014 John Kirk Panther Intercollegiate Field (as of Sept. 12)

- Georgia State
- UAB
- UALR
- Campbell
- Elon
- Kennesaw State
- Mercer
- Middle Tennessee
- Old Dominion
- South Alabama
- South Dakota
- South Dakota State
- Georgia (ind.)



Georgia State took both the team and individual titles at the 2010 John Kirk/Panther Intercollegiate.

### 2013 TEAM RESULTS

|                              |                         |
|------------------------------|-------------------------|
| 1. Kent State.....           | 311-318-302--931        |
| 2. Old Dominion .....        | 318-303-321--942        |
| <b>3. Georgia State.....</b> | <b>322-308-315--945</b> |
| James Madison.....           | 316-315-314--945        |
| 5. Samford.....              | 328-318-314--960        |
| 6. Southern Miss.....        | 332-316-320--968        |
| 7. Troy .....                | 324-331-315--970        |
| 8. Jacksonville.....         | 330-322-328--980        |
| 9. Eastern Kentucky.....     | 335-322-325--982        |
| 10. Jacksonville State ..... | 330-326-327--983        |
| 11. Delaware.....            | 336-329-327--992        |
| 12. UC Riverside.....        | 335-331-327--993        |
| 13. Houston Baptist.....     | 338-328-331--997        |
| 14. Murray State.....        | 337-338-328--1003       |

### 2013 INDIVIDUAL RESULTS RESULTS

|                            |                      |                      |
|----------------------------|----------------------|----------------------|
| 1. Kimberley Bradbury      | Old Dominion         | 73-73-77--223        |
| 2. Jennifer Ha             | Kent State           | 74-81-71--226        |
| 3. Maria Andrea Legaspi    | James Madison        | 77-75-77--229        |
| <b>4. Laura Sanchez</b>    | <b>Georgia State</b> | <b>81-74-75--230</b> |
| 5. Natalie Schmett         | Jacksonville         | 79-76-78--233        |
| 6. Erin Hawe               | Kent State           | 78-77-79--234        |
| Brandi Rodriguez           | Southern Miss        | 79-78-77--234        |
| <b>8. Solveig Helgesen</b> | <b>Georgia State</b> | <b>78-75-82--235</b> |
| Delaney Howson             | Murray State         | 78-81-76--236        |
| 10. Josee Doyon            | Kent State           | 78-82-76--237        |

### 2013 GEORGIA STATE INDIVIDUAL RESULTS

|                       |               |               |
|-----------------------|---------------|---------------|
| 4. Laura Sanchez      | Georgia State | 81-74-75--230 |
| T8. Solveig Helgesen* | Georgia State | 78-75-82--235 |
| T12. Melissa Siviter  | Georgia State | 85-79-74--238 |
| T15. Maria Palacios   | Georgia State | 81-76-82--239 |
| 36. Kimmy Graff       | Georgia State | 79-82-84--245 |
| T56. Julie Lied       | Georgia State | 81-79-93--253 |

\*played as individual



# JOHN KIRK PANTHER INTERCOLLEGIATE

| Year        | Champions            | Medalist                               | Course               | Rounds |
|-------------|----------------------|--|----------------------|--------|
| 2013        | Kent State           | Kimberley Bradbury (Old Dominion)      | Eagle's Landing C.C. | 3      |
| 2012        | Maryland             | Gabriella Wahl (East Tennessee State)  | Eagle's Landing C.C. | 3      |
| 2011        | Notre Dame           | Mitsuki Katahira (Daytona State)       | Eagle's Landing C.C. | 3      |
| <b>2010</b> | <b>Georgia State</b> | <b>Cathrine Madsen (Georgia State)</b> | Eagle's Landing C.C. | 3      |
| <b>2009</b> | <b>Georgia State</b> | <b>Sandra Maier (Georgia State)</b>    | Eagle's Landing C.C. | 3      |
| <b>2008</b> | <b>Georgia State</b> | Suzanne Stanley (Mississippi State)    | Eagle's Landing C.C. | 2      |
| 2007        | Maryland             | Stacey Tate (Memphis)                  | Eagle's Landing C.C. | 2      |
| 2006        | Augusta State        | Stacey Tate (Memphis)                  | Eagle's Landing C.C. | 2      |
| 2004        | Campbell             | Brooke Mangan (UAB)                    | Eagle's Landing C.C. | 2      |
| 2003        | Jacksonville State   | Sofia Gorelik (Campbell)               | Eagle's Landing C.C. | 2      |
| 2002        | Western Carolina     | Camilla Hilland (Miami)                | Eagle's Landing C.C. | 3      |
| <b>2001</b> | <b>Georgia State</b> | <b>Anna Molin (Georgia State)</b>      | Eagle's Landing C.C. | 2      |
| 2000        | Princeton            | Katie Redeker (Maryland)               | Chateau Elan G.C.    | 3      |
| 1999        | Kent State           | Jan Dowling (Kent State)               | Northwood C.C.       | 3      |
| 1998        | Campbell             | Kylie Pratt (Campbell)                 | Northwood C.C.       | 3      |
| 1997        | Campbell             | Mara Larrauri (Campbell)               | Northwood C.C.       | 3      |
| 1996        | Memphis              | Amanda Moltke-Leth (Memphis)           | Northwood C.C.       | 2      |
| 1995        | Memphis              | Melissa Isham (Memphis)                | Northwood C.C.       | 1      |
| 1994        | Troy                 | Nancy Verasteugi (UT-PA)               | Northwood C.C.       | 2      |
| 1993        | Campbell             | Janet Wooten (Campbell)                | Northwood C.C.       | 2      |

## APPEARANCES BY SCHOOL

|                       |    |                                       |                       |   |               |
|-----------------------|----|---------------------------------------|-----------------------|---|---------------|
| Jacksonville State    | 14 | 1995-97, 1999-2004, 2006-09, 2013     | Mississippi State     | 3 | 2008, 2011-12 |
| Campbell              | 13 | 1993-98, 2003-04, 2006-09, 2012       | Birmingham Southern   | 2 | 2001, 2007    |
| Southern Mississippi  | 11 | 1993-97, 2000-04, 2013                | Chattanooga           | 2 | 2009-10       |
| Mercer                | 9  | 1993-99, 2006-07                      | East Carolina         | 2 | 2006-07       |
| East Tennessee State  | 9  | 1993, 1999, 2000-01, 2006-09, 2011-12 | Eastern Kentucky      | 2 | 1993, 2013    |
| Troy                  | 9  | 1993-97, 1999, 2003, 2010, 2013       | Evansville            | 2 | 1997-1998     |
| Arkansas State        | 8  | 1994-97, 2006-07, 2010-11             | Louisville            | 2 | 2006-07       |
| Charleston Southern   | 8  | 1995-97, 1999-2003                    | New Orleans           | 2 | 1994, 2002    |
| Augusta State         | 7  | 2002-03, 2006-10                      | Oral Roberts          | 2 | 1996-97       |
| Samford               | 7  | 1993-94, 1996-99, 2013                | Princeton             | 2 | 2000-01       |
| South Alabama         | 7  | 1994-95, 1998, 2000-02, 2010          | Stetson               | 2 | 1994, 1999    |
| Western Carolina      | 7  | 1993, 2002, 2007-09, 2011-12          | Texas-Pan American    | 2 | 1994-95       |
| Maryland              | 6  | 2000, 2007-09, 2011-12                | Wofford               | 2 | 1998, 2003    |
| Murray State          | 6  | 1993-94, 2010-13                      | Ball State            | 1 | 2010          |
| Appalachian State     | 5  | 1993-97                               | Belmont               | 1 | 1999          |
| Elon                  | 5  | 2003-04, 2007-09                      | UC Riverside          | 1 | 2013          |
| Memphis               | 5  | 1995-96, 2006-08                      | Dayton                | 1 | 1993          |
| Middle Tennessee      | 5  | 2001-04, 2011                         | Delaware              | 1 | 2013          |
| Mobile                | 5  | 1993, 1996-99                         | Florida Atlantic      | 1 | 2004          |
| James Madison         | 4  | 1996, 2009, 2011, 2013                | Florida International | 1 | 2010          |
| Miami                 | 4  | 2002, 2008-09, 2011                   | Florida Southern      | 1 | 1999          |
| Radford               | 4  | 1995-98                               | Furman                | 1 | 2009          |
| Tennessee Tech        | 4  | 1993-96                               | Houston Baptist       | 1 | 2013          |
| UAB                   | 4  | 1997-98, 2002, 2004                   | Jacksonville          | 1 | 2013          |
| UCF                   | 4  | 2002-04, 2011                         | Kentucky              | 1 | 2006          |
| Daytona State         | 4  | 2004, 2010-12                         | Michigan              | 1 | 2011          |
| Arkansas-Little Rock  | 3  | 1994, 2008, 2010                      | Montevallo            | 1 | 2003          |
| Coastal Carolina      | 3  | 2006-08                               | Notre Dame            | 1 | 2011          |
| College of Charleston | 3  | 1994, 1996-97                         | Nova Southeastern     | 1 | 2012          |
| Kent State            | 3  | 1998-99, 2013                         | Old Dominion          | 1 | 2013          |
| Mississippi           | 3  | 1994, 2006-07                         | Spring Hill College   | 1 | 1993          |
| Richmond              | 3  | 2006-08                               | Texas State           | 1 | 2010          |
| Xavier                | 3  | 2008, 2010-11                         | UNC Greensboro        | 1 | 2009          |
|                       |    |                                       | UNC Wilmington        | 1 | 1997          |
|                       |    |                                       | Yale                  | 1 | 2004          |



## LOWEST THREE-ROUND TOTAL

| Team                    | Score      | Year        |
|-------------------------|------------|-------------|
| 1. Maryland             | 885        | 2012        |
| 2. <b>Georgia State</b> | <b>886</b> | <b>2009</b> |
| 3. Notre Dame           | 888        | 2011        |
| 4. Western Carolina     | 891        | 2002        |
| Mississippi State       | 891        | 2012        |

## LOWEST TWO-ROUND TOTAL

| Team                 | Score | Year |
|----------------------|-------|------|
| 1. Maryland          | 585   | 2007 |
| East Tennessee State | 585   | 2012 |
| 2. Maryland          | 588   | 2012 |
| 3. Louisville        | 590   | 2007 |
| 4. Mississippi State | 592   | 2012 |
| Campbell             | 592   | 2012 |

## LOWEST FIRST ROUND

| Team                    | Score      | Year        |
|-------------------------|------------|-------------|
| 1. Maryland             | 283        | 2007        |
| 2. Mississippi State    | 289        | 2012        |
| 2. East Carolina        | 291        | 2007        |
| 3. Western Carolina     | 292        | 2002        |
| 4. <b>Georgia State</b> | <b>294</b> | <b>2004</b> |

## LOWEST SECOND ROUND

| Team                    | Score      | Year        |
|-------------------------|------------|-------------|
| 1. East Tennessee State | 289        | 2012        |
| 2. Furman               | 290        | 2009        |
| 3. <b>Georgia State</b> | <b>291</b> | <b>2009</b> |
| 4. Notre Dame           | 293        | 2011        |
| East Tennessee State    | 293        | 2009        |
| Maryland                | 293        | 2012        |

## LOWEST THIRD ROUND

| Team                    | Score | Year |
|-------------------------|-------|------|
| 1. Western Carolina     | 295   | 2002 |
| 2. Maryland             | 296   | 2011 |
| 3. East Tennessee State | 297   | 2011 |
| Notre Dame              | 297   | 2011 |
| Campbell                | 297   | 1997 |
| Maryland                | 297   | 2012 |



**Cathrine Madsen**

*T4th for Lowest Individual 2nd Round*



**Anna Scott**

*T3rd for Lowest Individual 1st Round*



**Sandra Maier**

*T4th for Lowest Individual 2nd Round  
T5th for Lowest Individual 3rd Round*



**Claire Starkie**

*T5th for Lowest Individual 3rd Round*

## LOW INDIVIDUAL TWO-ROUND TOTAL

| Golfer (School)                     | Score | Year |
|-------------------------------------|-------|------|
| 1. Stacey Tate (Memphis)            | 140   | 2007 |
| Amanda Moltke-Leth (Memphis)        | 140   | 1996 |
| Gabriella Wahl (East Tennessee St.) | 140   | 2012 |
| 3. Kelly Calkin (Maryland)          | 141   | 2007 |
| Lene Krog (East Carolina)           | 141   | 2007 |
| Ally McDonald (Mississippi State)   | 141   | 2012 |

## LOW INDIVIDUAL THREE-ROUND TOTAL

| Golfer (School)                        | Score | Year |
|--|-------|------|
| 1. Gabriella Wahl (East Tennessee St.) | 209   | 2012 |
| 2. Mitsuki Katahira (Daytona State)    | 210   | 2011 |
| 3. Becca Huffer (Notre Dame)           | 211   | 2011 |
| 4. Ally McDonald (Mississippi State)   | 212   | 2012 |
| 5. Jessie Hollandsworth (Maryland)     | 213   | 2011 |

## LOW INDIVIDUAL FIRST ROUND

| Golfer (School)                        | Score     | Year        |
|--|-----------|-------------|
| 1. Manuela Tarazona (Jacksonville St.) | 68        | 2007        |
| Stacey Tate (Memphis)                  | 68        | 2007        |
| 3. Cindy LaCrosse (Louisville)         | 69        | 2007        |
| Emelie Lind (East Carolina)            | 69        | 2007        |
| Lene Krog (East Carolina)              | 69        | 2007        |
| Mary Mattson (Campbell)                | 69        | 2007        |
| <b>Anna Scott (Georgia State)</b>      | <b>69</b> | <b>2004</b> |
| Jazmin Cataldo (Miami)                 | 69        | 2002        |
| Camilla Hillard (Miami)                | 69        | 2002        |
| Melissa Isham (Memphis)                | 69        | 1995        |
| Rica Tse (Mississippi State)           | 69        | 2012        |
| Blaire Minter (Western Carolina)       | 69        | 2012        |

## LOW INDIVIDUAL SECOND ROUND

| Golfer (School)                           | Score     | Year        |
|---|-----------|-------------|
| 1. Sian Evans (East Tennessee St.)        | 67        | 2012        |
| 2. Amanda Moltke-Leth (Memphis)           | 68        | 1996        |
| 3. Stefanie Kenoyer (Furman)              | 69        | 2009        |
| Lauren Smith (Augusta State)              | 69        | 2006        |
| 4. <b>Cathrine Madsen (Georgia State)</b> | <b>70</b> | <b>2010</b> |
| Jackie Hilea (Furman)                     | 70        | 2009        |
| <b>Sandra Maier (Georgia State)</b>       | <b>70</b> | <b>2009</b> |
| Camilla Hillard (Miami)                   | 70        | 2002        |
| Brooke Mangan (UAB)                       | 70        | 2002        |
| Gabriella Wahl (East Tennessee St.)       | 70        | 2012        |

## LOW INDIVIDUAL THIRD ROUND

| Golfer (School)                     | Score | Year |
|-------------------------------------|-------|------|
| 1. Mitsuki Katahira (Daytona State) | 66    | 2011 |
| Nina Muehl (East Tennessee St.)     | 66    | 2011 |
| 3. Jessie Hollandsworth (Maryland)  | 69    | 2011 |
| Gabriella Wahl (East Tennessee St.) | 69    | 2012 |
| 4. Becca Huffer (Notre Dame)        | 70    | 2011 |
| 5. Jennifer Ha (Kent State)         | 71    | 2013 |
| Rica Tse (Mississippi State)        | 71    | 2012 |
| Ally McDonald (Mississippi State)   | 71    | 2012 |
| Sofie Kvarnstrom (W. Carolina)      | 71    | 2012 |
| Abbey Gittings (Nova Southeastern)  | 71    | 2012 |

# GEORGIA STATE UNIVERSITY

**G**eorgia State University is a leading urban research university, educating Georgia's most diverse student population.

With an enrollment of more than 32,000 students, it is the second largest institution in the University System of Georgia. Students arrive from every county in Georgia, every state in the nation and more than 150 countries.

Georgia State offers educational opportunities for traditional and nontraditional students at both the graduate and undergraduate levels by blending the best of theoretical and applied inquiry, scholarly and professional pursuits, and scientific and artistic expression.

With strong disciplinary-based departments and a wide array of problem-oriented interdisciplinary programs, the goal of the university is to develop, transmit, and utilize knowledge in order to provide access to quality education for diverse groups of students, to educate leaders for the State of Georgia and the nation, and to prepare citizens for lifelong learning in a global society.

Georgia State was founded in 1913 and celebrates its Centennial in 2013. The university offers 250 degree programs in 100 fields of study at the bachelor's, master's, specialist and doctoral levels through eight colleges: the Andrew Young School of Policy Studies, the Byrdine F. Lewis School of Nursing and Health Professions, the College of Arts and Sciences, the College of Education, the College of Law, the Honors College, the Institute of Public Health, and the J. Mack Robinson College of Business.



One of the most diverse universities in America, Georgia State is first in the nation among non-profit institutions in graduating African-American students.

Georgia State has over 50 nationally and internationally ranked programs, including these top U.S. programs:

- No. 1 Best Value Law School
- No. 2 Best Health Law Program
- No. 2 Best JD/MA in Philosophy
- No. 4 Best Program in Public Finance and Budgeting
- No. 4 Best Risk Management and Insurance Program
- No. 8 Best Computer Information Systems Program
- No. 10 Best Real Estate Program
- No. 12 Best Program in City Management and Urban Policy
- No. 12 Best Program in Nonprofit Management
- No. 13 Best Hospitality Program



# GSU CAMPUS

**L**ocated in the heart of one of America's great cities, the Georgia State University campus has a profound influence on the changing landscape of downtown Atlanta.

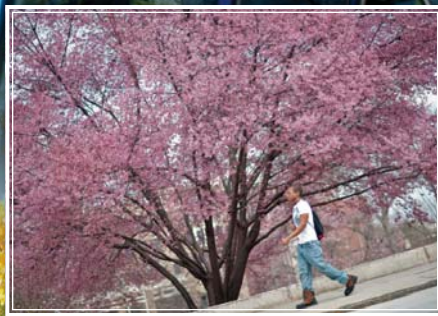
While the building blocks of the university will always be high-achieving students, world-class faculty and groundbreaking research, Georgia State boasts an ever-expanding and improving campus to accommodate that foundation.

In the last decade, the Rialto Theater restoration, Student Center, Student Recreation Center, University Lofts, University Commons, Helen M. Aderhold classroom building, Parker H. Petit Science Teaching and Research Center and many other buildings have transformed the downtown cityscape at Atlanta's core.



Georgia State is where city life meets campus life for a unique and exciting student experience.

- Five residence halls housing over 4,000 students
- More than 300 student organizations
- Six campus dining locations
- State-of-the-art Student Recreation Center
- Six student media outlets



# CAMPUS HOUSING

**T**he Georgia State University campus features some of the finest housing facilities in the nation. On-campus housing continues to grow, and more than 4,000 GSU students now live on campus.

The University Commons, opened in 2007, is a 4.2-acre complex of four buildings surrounding a landscaped courtyard. All units come with fully-equipped kitchens, furnished bedrooms and spacious living areas.

During the fall of 2009, Patton Hall opened to provide suite-style for 325 residents, including an on-site dining facility.

In 2010, GSU opened its first Greek housing, which consists of nine fraternities and sororities housed in three-story townhomes.

Opened in 2011, the Piedmont North Complex houses approximately 1,100 residents and offers a traditional residence hall lifestyle with all the amenities one would expect from a premier housing program, including a dining facility.

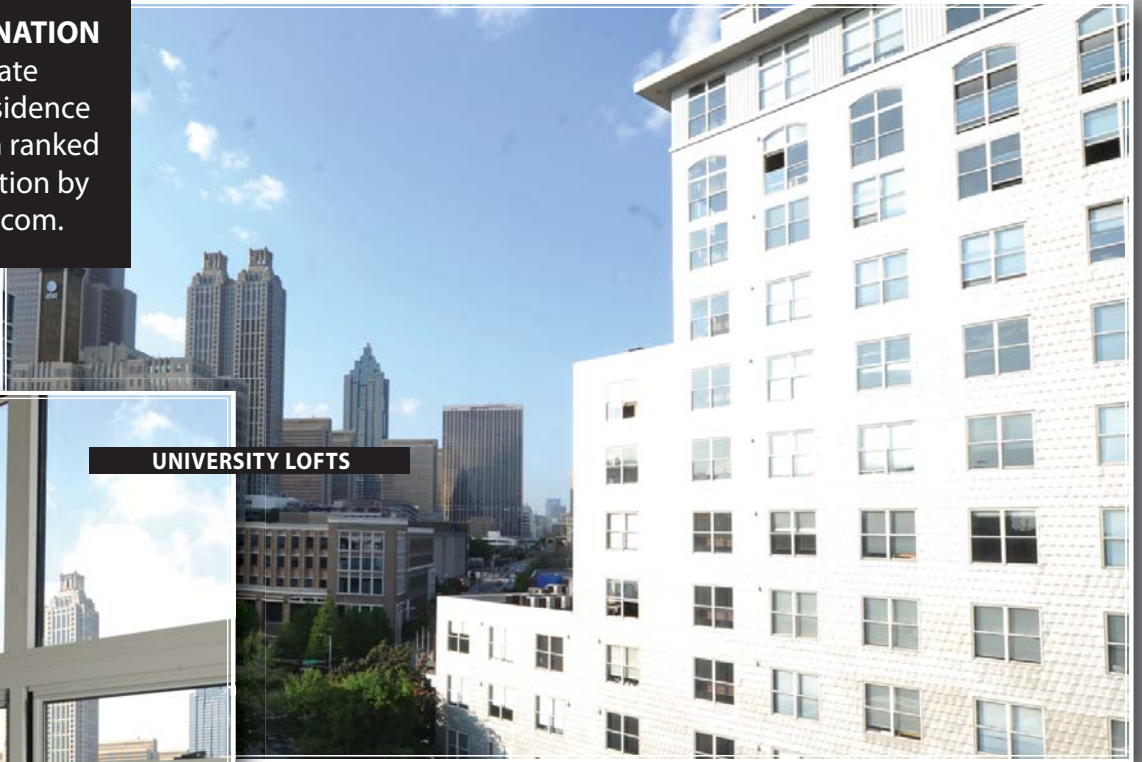
The University Lofts, opened in 2002, contain fully-furnished, loft-style apartments that blend urban style with modern features.

All residence halls feature a full range of amenities including study and community lounge areas, laundry facilities, 24/7 security patrols, on-site or nearby parking and more.

UNIVERSITY COMMONS

**NO. 1 IN THE NATION**

Georgia State University's residence halls have been ranked No. 1 in the nation by Dormsplash.com.



**UNIVERSITY LOFTS**



**PIEDMONT NORTH**



**PATTON HALL**



**GREEK HOUSING**

# ATLANTA

**A**tlanta is integral to Georgia State's educational experience. Students and faculty are part of a living laboratory where they study and create solutions for the challenges of the 21st century.

The metropolitan Atlanta area is home to more than five million people and the world's busiest airport.

GSU students benefit from resources for research, access to prominent leaders and thinkers, and proximity to internships, jobs and service related to their field of study. Students intern at Fortune 500 companies, national non-profits, government agencies and federal and state courts.

More Georgia executives hold advanced degrees from the Robinson College of Business than from any other school in the Southeast.



Some of the many attractions within minutes of the Georgia State campus:

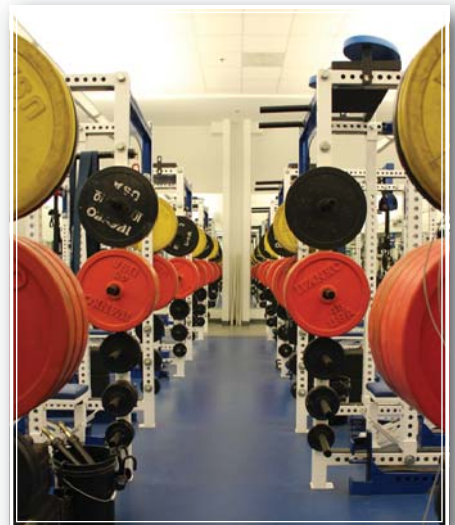
- Georgia Aquarium
- Centennial Olympic Park
- Georgia Dome
- Philips Arena
- Martin Luther King Jr. Center
- CNN Center
- State Capitol
- Turner Field
- World of Coca Cola
- Carter Presidential Library
- College Football Hall of Fame (open in 2014)



# SPEED, STRENGTH & CONDITIONING

**D**evin Vernick, an Assistant Speed, Strength & Conditioning coach, possesses a wealth of experience and works directly with the women's golf program. Among his specialties is making sure that the student-athletes are trained properly to get the most out of their games.

The Panthers train in a 3,000-square foot facility that features state-of-the-art equipment.



# SPORTS MEDICINE

**D**inika Johnson, Head Athletic Trainer, works with the Georgia State women's golf student-athletes in the prevention and treatment of injuries. Among her goals is to make sure team team is properly stretching and eating healthy to allow them to be in peak condition when competing on the golf course.

Panther student-athletes benefit from outstanding sports medicine facilities at all venues.



# STUDENT-ATHLETE DEVELOPMENT

**G**eorgia State University is committed to providing educational, personal and community development that will enhance the quality of the student-athlete experience.

Georgia State's Student-Athlete Development department became just the second in the nation to be certified at the highest level by the National Association of Academic Advisors for Athletics.

The Georgia State program is headed by Associate Director of Athletics Dena Freeman-Patton. Also working directly with the women's golf program is Senior Academic Coordinator Dusty Bennett, who coordinates Georgia State's Student Affairs programs.

Georgia State's commitment to academic support and student-athlete development is paying dividends as the Panthers have enjoyed unprecedented success in the classroom. GSU's student-athlete population has posted a combined cumulative grade point average of 3.0 or better for the last five years.



**TOP HONORS:** The women's golf team took top honors at the 2013 Georgia State Blue Carpet Awards, earning the award for the top team GPA over the course of the last year.

## WOMEN'S GOLF HONORS IN 2012-13:

1 President's List

4 Dean's List

2 AD's Honor Roll

## ACADEMIC HONORS:

Laura Sanchez has earned WGCA All-American Scholar honors three years in a row to go along with Athletic Director's Honor Roll and Dean's List recognition.





**A HELPING HAND:**  
GSU student-athletes have completed more than 5,000 hours of community service in each of the last three years.

# COMMUNITY OUTREACH

**G**iving back to the community is an essential component of the Georgia State athletics program. Panther student-athletes, coaches and staff volunteer their time and talents to a wide range of programs and organizations, including Samaritan's Feet, Make-A-Wish, Team Tiger, Boys & Girls Clubs, the Salvation Army, local elementary schools, and many others.



# ATHLETIC FACILITIES

**G**eorgia State has the honor of playing some of the very best courses in the Atlanta area. The Panthers have enjoyed Eagle's Landing Country Club as its home for more than 10 years and also play other courses in the Atlanta area.

The Panthers have hosted the John Kirk Panther Intercollegiate at Eagle's Landing for more than 10 years.

The course used to host the LPGA's Chick-fil-a Charity Classic, which many considered to be the Tour's fifth major.

The 27-hole facility features a state-of-the-art driving range, full short-game practice area and full locker room facilities for the team to use.



# MERCEDES SPRINTER VAN

**W**ith the support of the men's golf team, the women's golf team gets to travel in style several times during the year in a state-of-the-art Mercedes Sprinter Van.

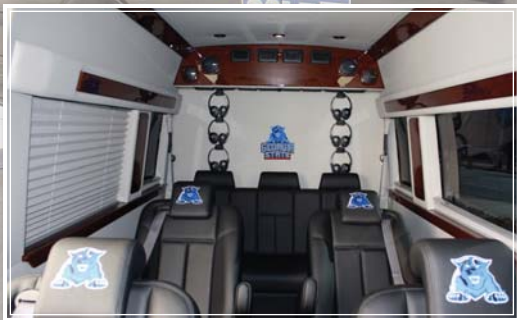
The van includes a wireless Internet router, power outlets for computers, refrigerator and room for up to nine passengers.

It is equipped with a mobile theater sound system, DVD player, wireless head set for each individual, overhead lighting and much more.

The van is completely decked out with Georgia State logos on both the inside and outside, allowing our team to represent Georgia State to the fullest when on the road.



**CAPTAINS CHAIRS:** Each member of the team gets their own extra-comfortable captains chair, fully equipped with power to be able to work on school projects while on the road.



## Friends of Panther Golf:

Our golf team is able to be successful on and off the course with the very special support from the Eagle's Landing Booster Club members and others who have donated both their time and money to help support our squad.

With five NCAA Regional appearances since 2003, the Georgia State women's golf program has become one that is synonymous with success and excellence. From our first team to reach the NCAA Regional in 2003 to watching a member of our squad play for a national championship in 2006, we are going to continue to strive to bring in the best recruits who will allow us to reach our ultimate goals. We are currently setting the foundation for what we hope will be many more years of success on and off the course and we must thank you for helping us grow into a premier national program.

We have come a long way since I first started here, but we still have a lot that we would like to accomplish.

Personally, I know what it takes to help our young ladies get to the next level, but without the resources, including things like a practice facility, it will truly be very difficult. We can be good, but it will be difficult to be

great. We have a solid nucleus of young ladies this year who are looking to bring a another conference championship to Georgia State along with a sixth NCAA Regional appearance. I can honestly say from day one of the 2012-13 season, we have improved tremendously. We have recruited excellent young players and students for our 2014 class. The future is bright for Georgia State Golf and we want you to be a part of it.

As I continue to build our program at Georgia State, I look forward to continue to meet each and every one of you who has supported the program. I hope that you will continue to support what we are building here, making Panther golf one of the best in the country! If I can ever answer any of your questions, please do not hesitate to call me in my office (404-413-4066) or on my cell (404-556-2310). I want as much interaction and discussion with our fans and booster club as possible, as that is how we will achieve our best results!

Sincerely,

Coach Cathy Mant

## EAGLE'S LANDING BOOSTER CLUB MEMBERS

Don Barnette  
John Blanton  
Morris Boyer  
John Calvert  
Bill Cantrell  
Delores Crockett  
John Cullen  
Terry Cullen  
Alan Davidson  
Kerry Davidson  
Biff Driver  
Wayne Duncan  
Jon Dunn  
Dean Echols  
James Gaddy  
Jameson Gaddy  
Vernon Griffin  
Ja Hong  
Van Jakes  
Rick Mant  
Brian Miller  
German Reyes  
Charlie Strickland  
Jerel Verner  
Dale Wheeler  
J.T. Williams

## SPECIAL THANKS

Eagle's Landing Country Club  
Berkeley Hill Country Club  
Bridgestone Golf  
Henry County Quality Growth  
Steve Robinson & Chick-fil-A  
Bill & Su Reeves  
Jim & Gail Stark  
Bob & Lynn Lewis  
Mr. & Mrs. Jeff Graff  
Kelly Flynn  
Tom Bremer  
Legacy Golf Links





STATESPORTS.COM STATE GeorgiaStateSports.com STATE GeorgiaStateSports.com

BLUE CARPET AWARDS

# PANTHERS ON THE ROAD

SUN BELT CHAMPIONSHIP

GOLF WEEK CONFERENCE CHALLENGE

MUSCLE SHOALS, ALA.

2ND PLACE AT UNCW

CHEERING ON THE MEN'S TEAM

VISITING AUGUSTA NATIONAL





JOANNA KLATTEN



ANNA SCOTT

# PANTHERS AT THE NEXT LEVEL



CATHERINE MADSEN



CHARLOTTE LORENTZEN



NICOLE LOESCH



ILISKA VERWEY

Anna Scott and Joanna Klatten are both competing professionally overseas, while Catherine Madsen, Charlotte Lorentzen, Nicole Loesch and Iliska Verwey have all competed in Ladies European Tour Q-School.